

Prairie Dune

HOME SERIES



SKYLINE[®]

BRINGING AMERICA HOME. BRINGING AMERICA FUN.
ARKANSAS CITY, KANSAS



NAHB
NATIONAL ASSOCIATION
OF HOME BUILDERS

14' SERIES

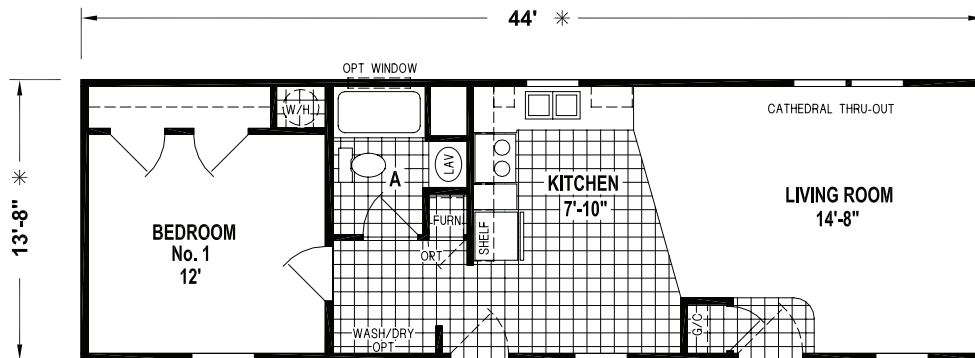
The Prairie Dune series has been designed to reflect the needs of families through high-end craftsmanship and quality – with affordable amenities and distinctive design details. Manufactured in Arkansas City, Kansas and backed by over 65 years of manufacturing experience, a 15-month warranty and stellar customer service – take a look for yourself to see why the Prairie Dune series by Skyline Homes is the right decision for you and your family.

Some features shown may be optional.



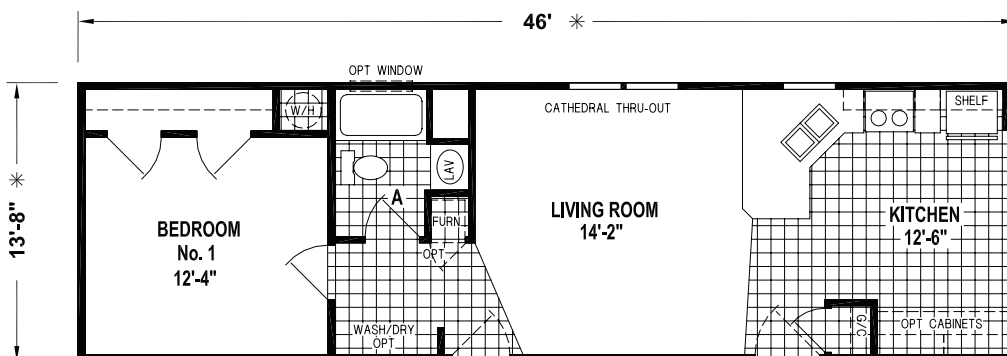
8370C

44' x 14' – 601 SQ. FT. – 1 BEDROOM – 1 BATH – CATHEDRAL THRU-OUT



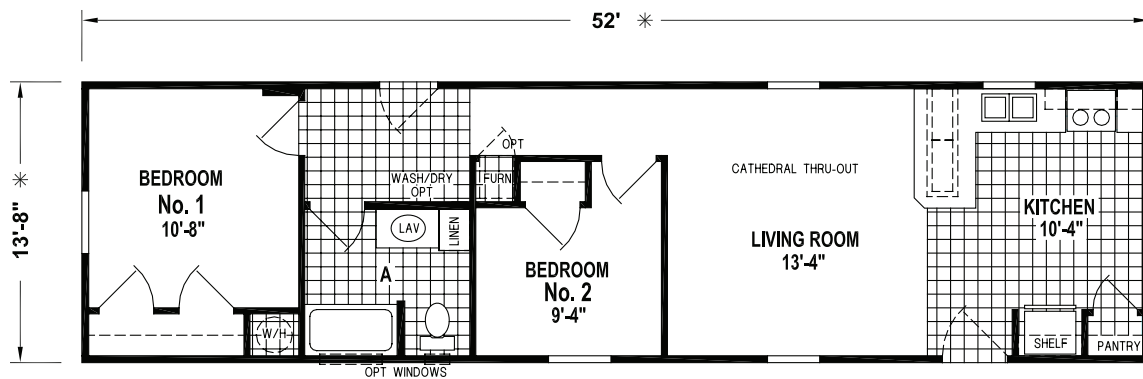
8371C

46' x 14' – 628 SQ. FT. – 1 BEDROOM – 1 BATH – CATHEDRAL THRU-OUT



8320

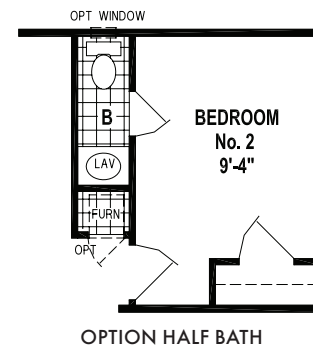
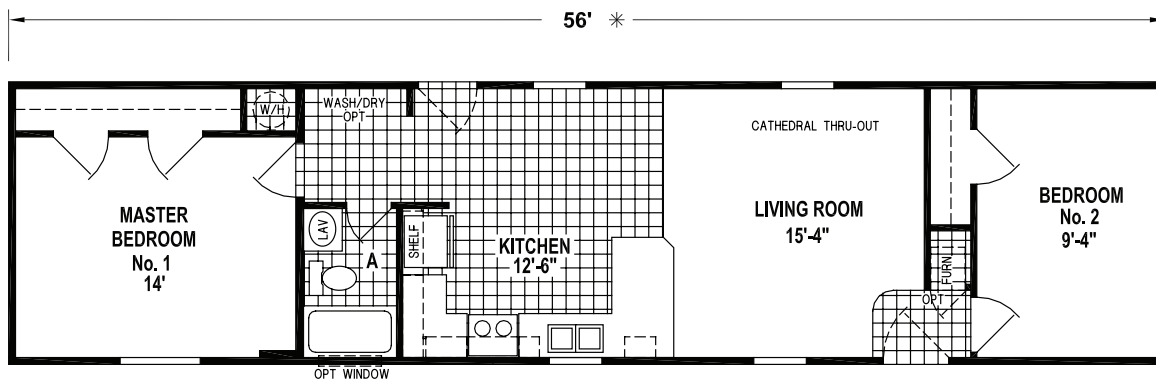
52' x 14' - 710 SQ. FT. - 2 BEDROOMS - 1 BATH - CATHEDRAL THRU-OUT



8335

56' x 14' - 765 SQ. FT. - 2 BEDROOMS - 1 BATH - CATHEDRAL THRU-OUT

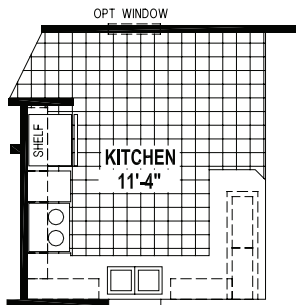
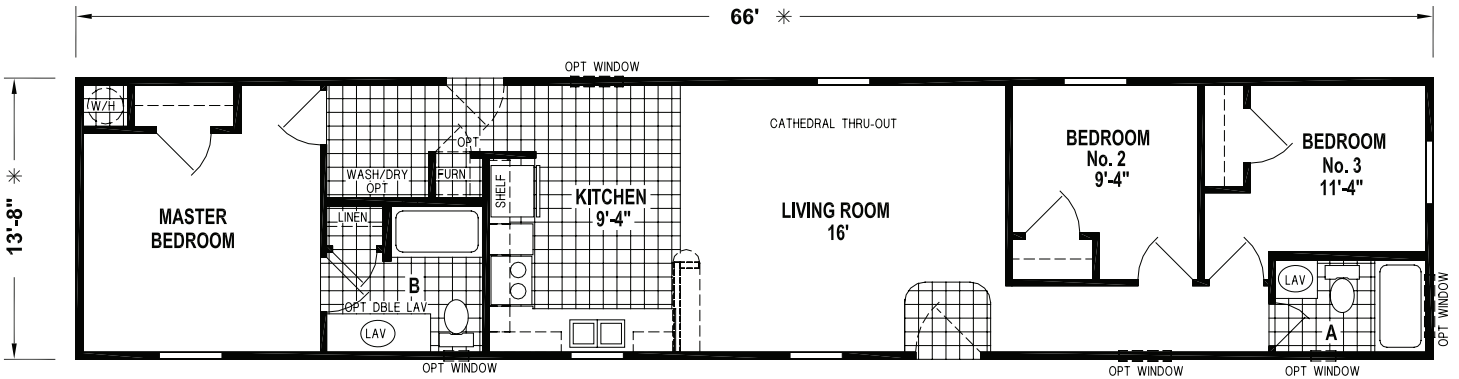
OPTION SLIDING GLASS DOOR



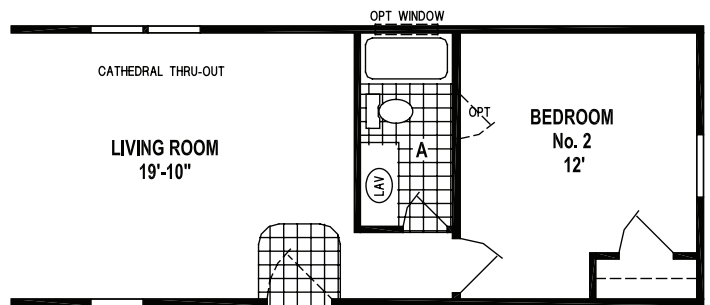
14' SERIES

8300

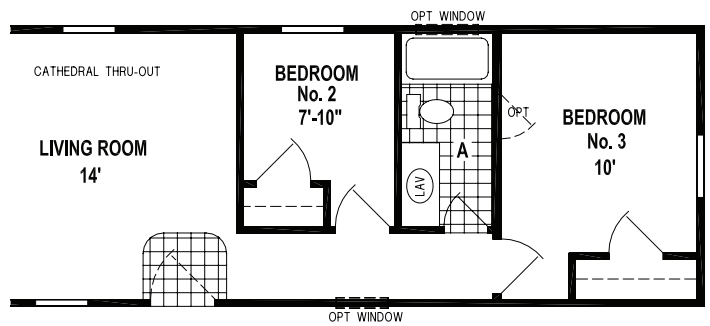
66' x 14' - 902 SQ. FT. - 3 BEDROOMS - 2 BATHS - CATHEDRAL THRU-OUT



OPTION SNACK BAR KITCHEN WITH S. B. OVERHEADS



OPTION TWO BEDROOM CONFIGURATION



ALTERNATE FRONT END

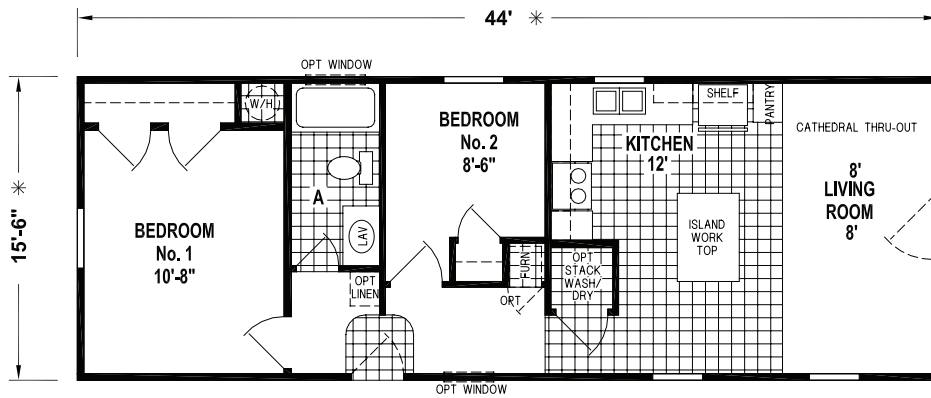


Some features shown may be optional.

SKYLINE HOMES -
COMMITTED TO QUALITY
CRAFTSMANSHIP, VALUE &
CUSTOMER SATISFACTION

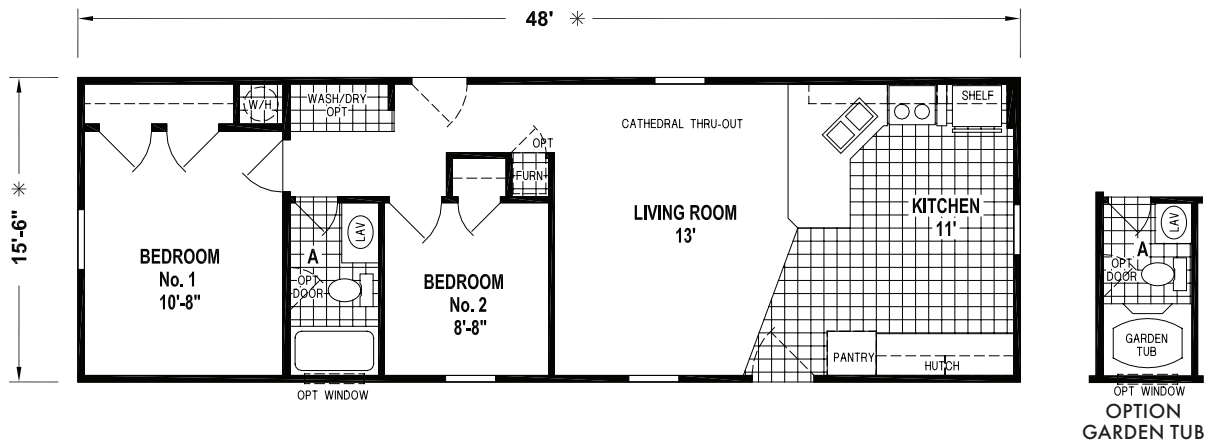
8700

44' x 16' - 682 SQ. FT. - 2 BEDROOMS - 1 BATH - CATHEDRAL THRU-OUT



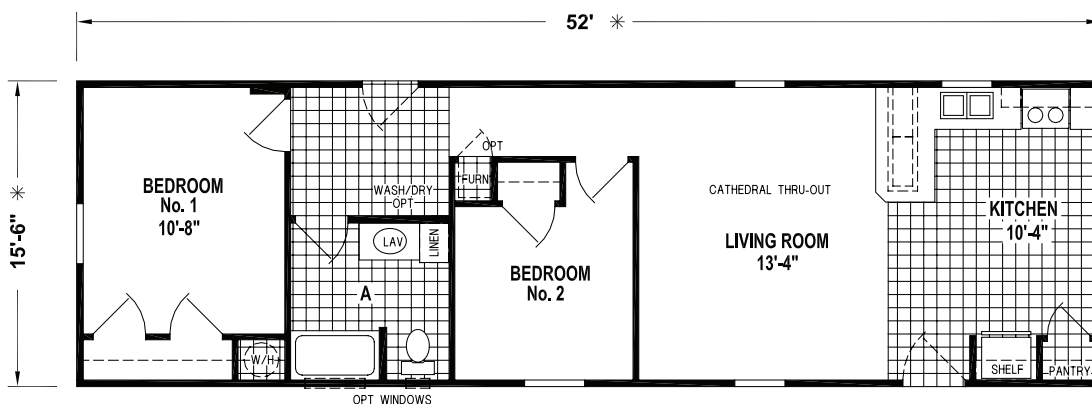
8752

48' x 16' - 744 SQ. FT. - 2 BEDROOMS - 1 BATH - CATHEDRAL THRU-OUT



8720

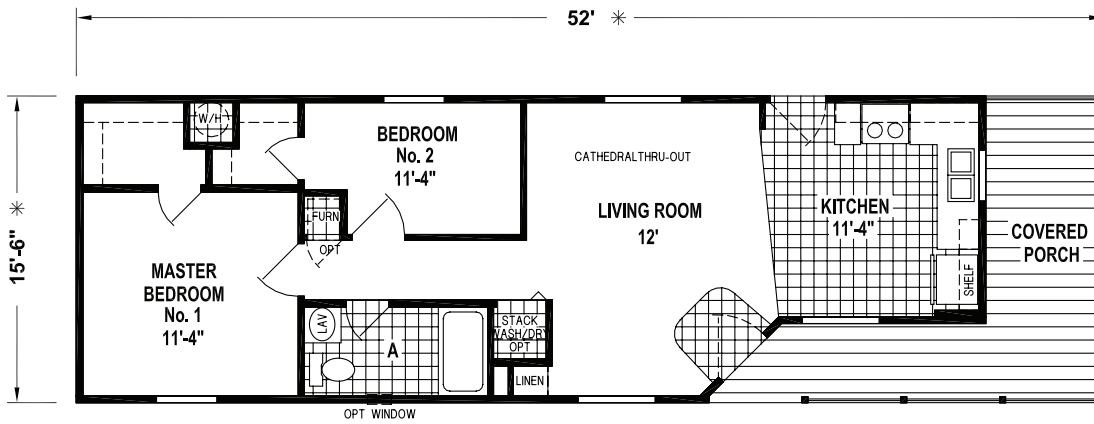
52' x 16' - 806 SQ. FT. - 2 BEDROOMS - 1 BATH - CATHEDRAL THRU-OUT



16' SERIES

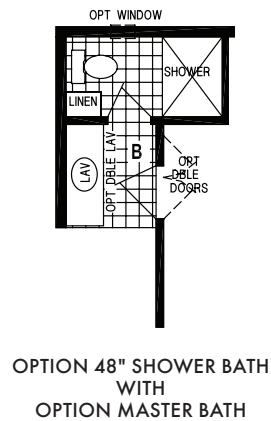
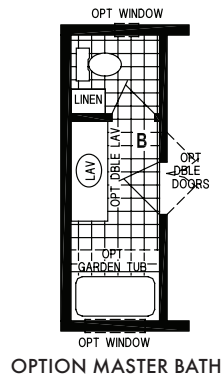
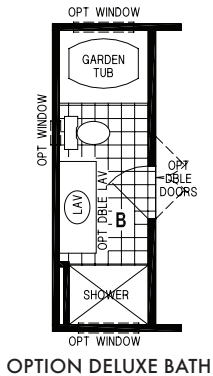
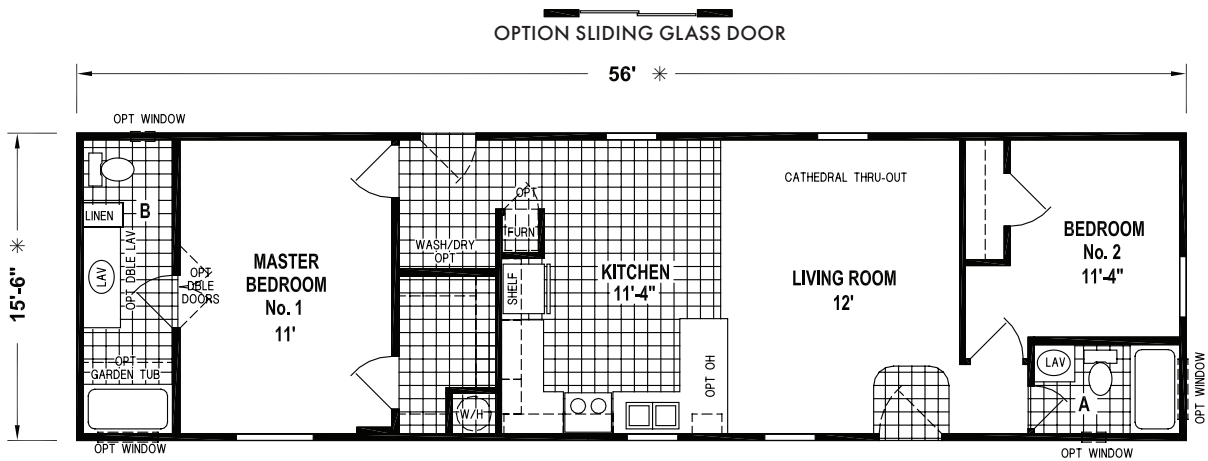
8769

52' x 16' - 806 SQ. FT. - 2 BEDROOMS - 1 BATH - CATHEDRAL THRU-OUT



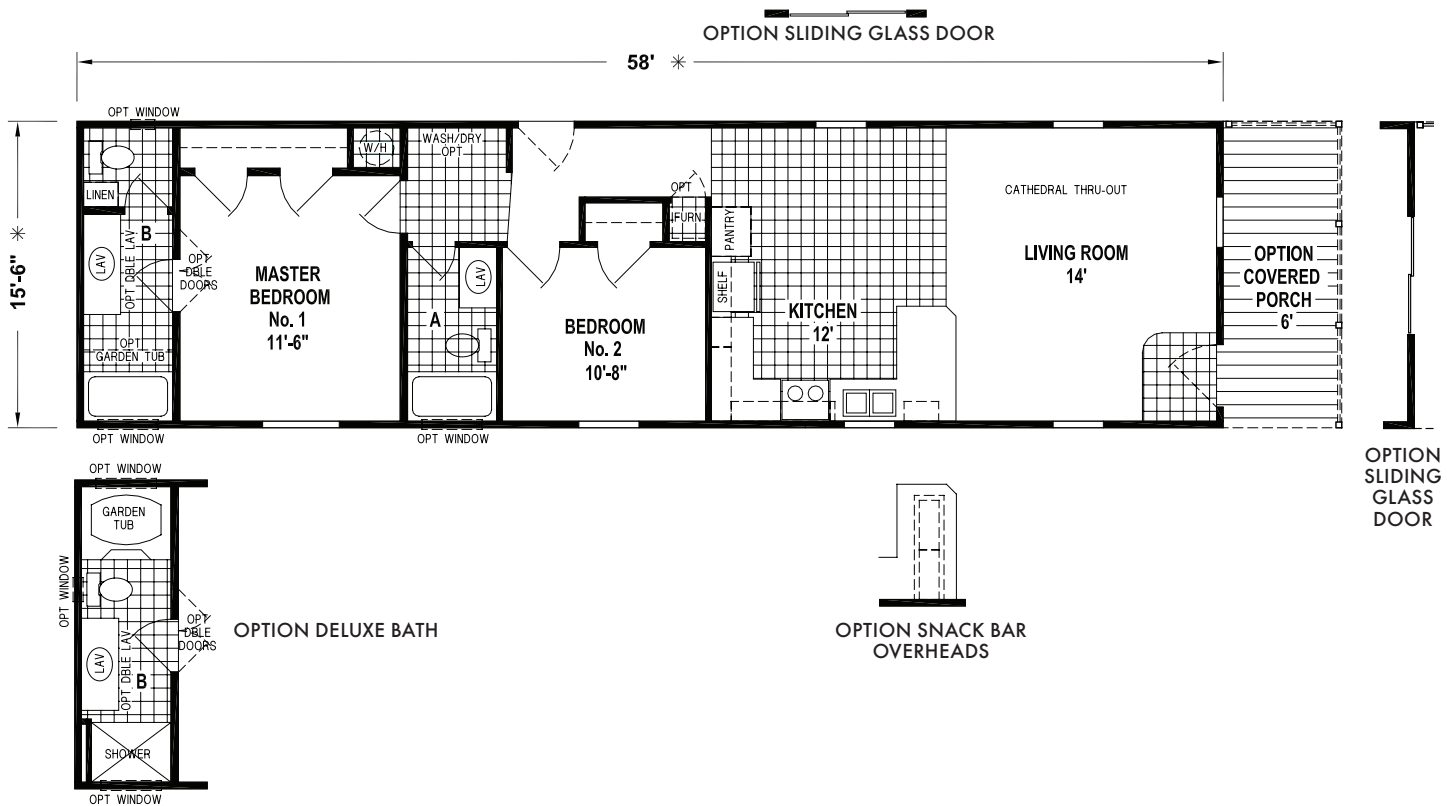
8719

56' x 16' - 868 SQ. FT. - 2 BEDROOMS - 2 BATHS - CATHEDRAL THRU-OUT



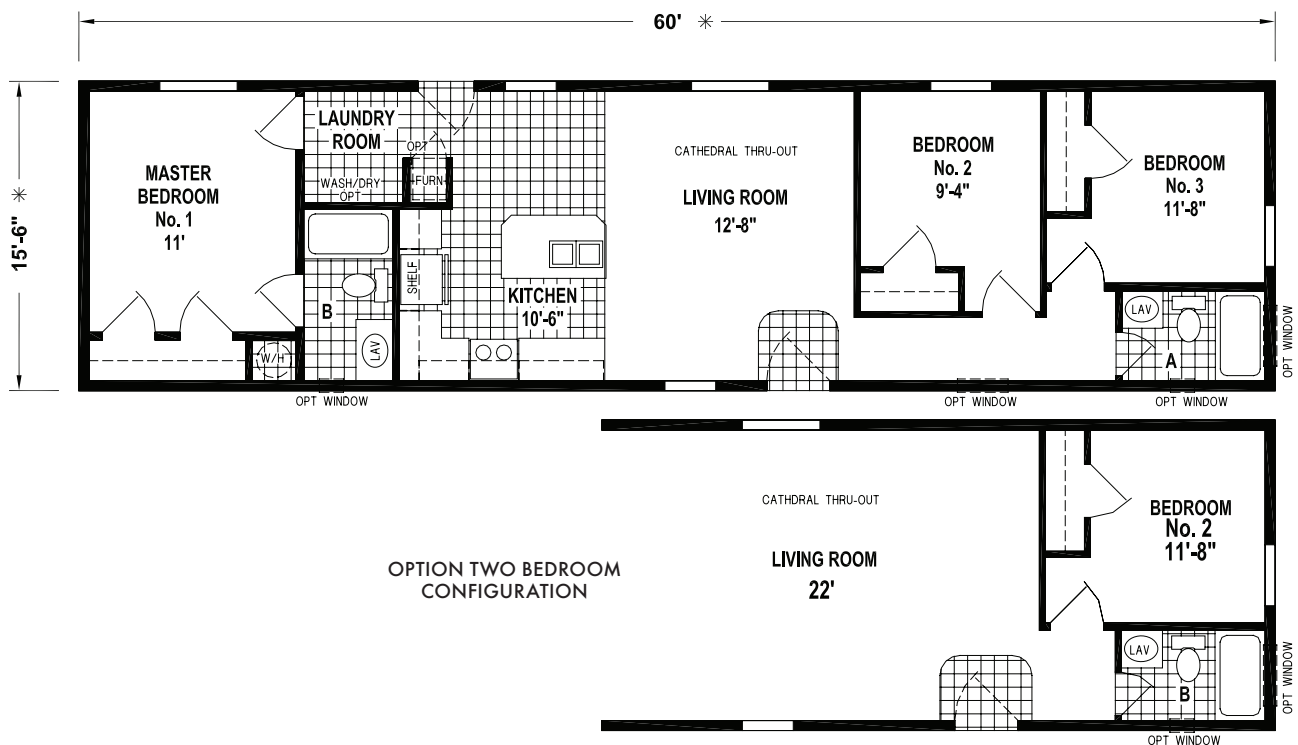
8761

58' x 16' - 899 SQ. FT. - 2 BEDROOMS - 2 BATHS - CATHEDRAL THRU-OUT



8721

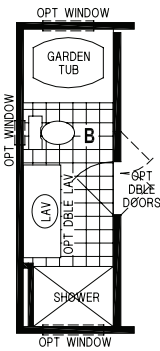
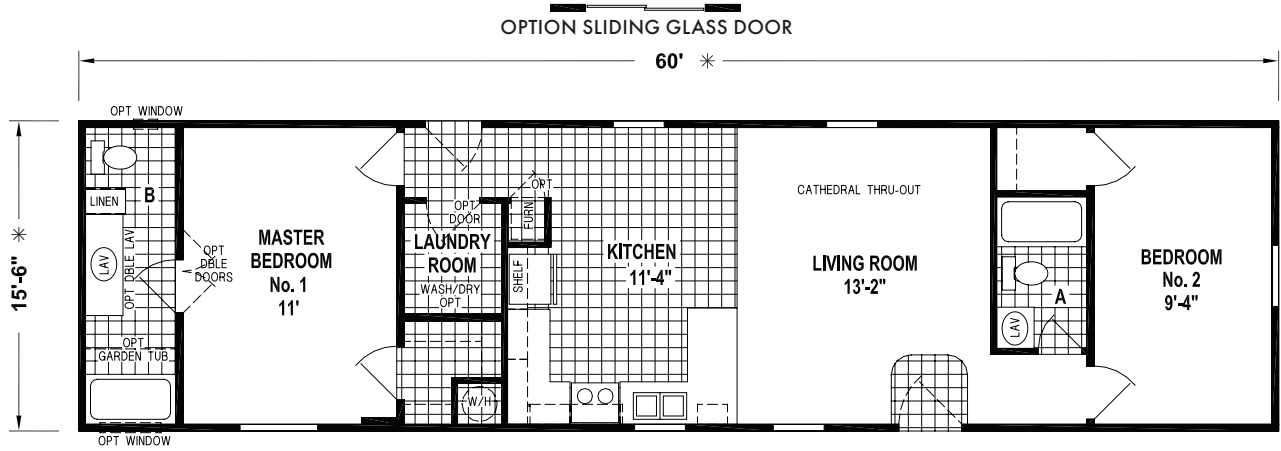
60' x 16' - 930 SQ. FT. - 3 BEDROOMS - 2 BATHS - CATHEDRAL THRU-OUT



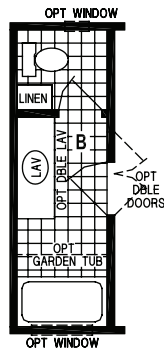
16' SERIES

8732

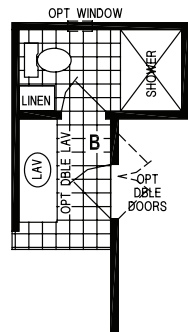
60' x 16' - 930 SQ. FT. - 2 BEDROOMS - 2 BATHS - CATHEDRAL THRU-OUT



OPTION DELUXE BATH



OPTION MASTER BATH

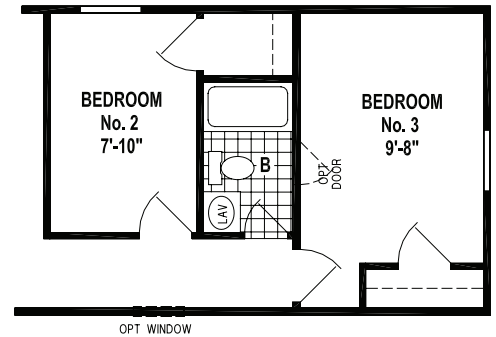
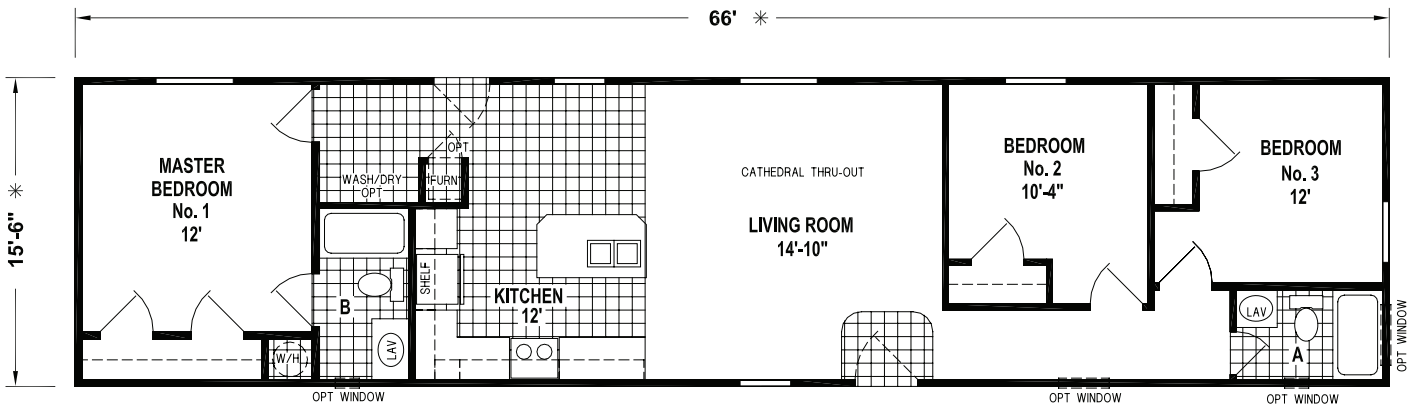


OPTION 48" SHOWER BATH
WITH
OPTION MASTER BATH

All Skyline homes are covered by our no-nonsense 15-month warranty, the very best in the industry. It's our way of showing our customers how much we believe in the quality we build into every Skyline home. Our warranty gives new homeowners the assurance that comes from working with a company with more than six decades of building.

8725

66' x 16' - 1,023 SQ. FT. - 3 BEDROOMS - 2 BATHS - CATHEDRAL THRU-OUT

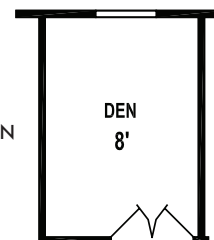
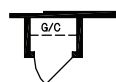
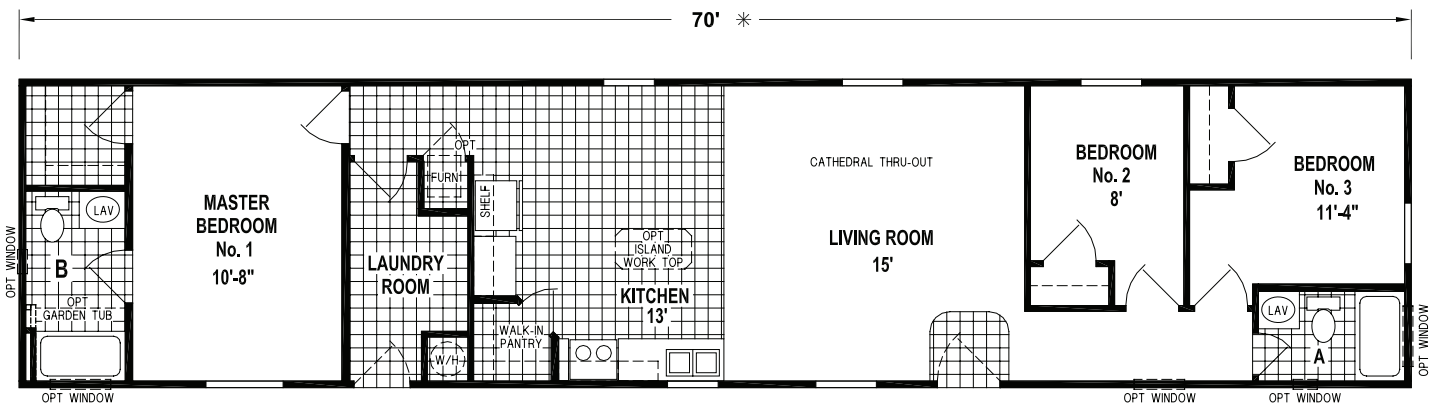


ALTERNATE FRONT END

8702C

70' x 16' - 1,085 SQ. FT. - 3 BEDROOMS - 2 BATHS - CATHEDRAL THRU-OUT

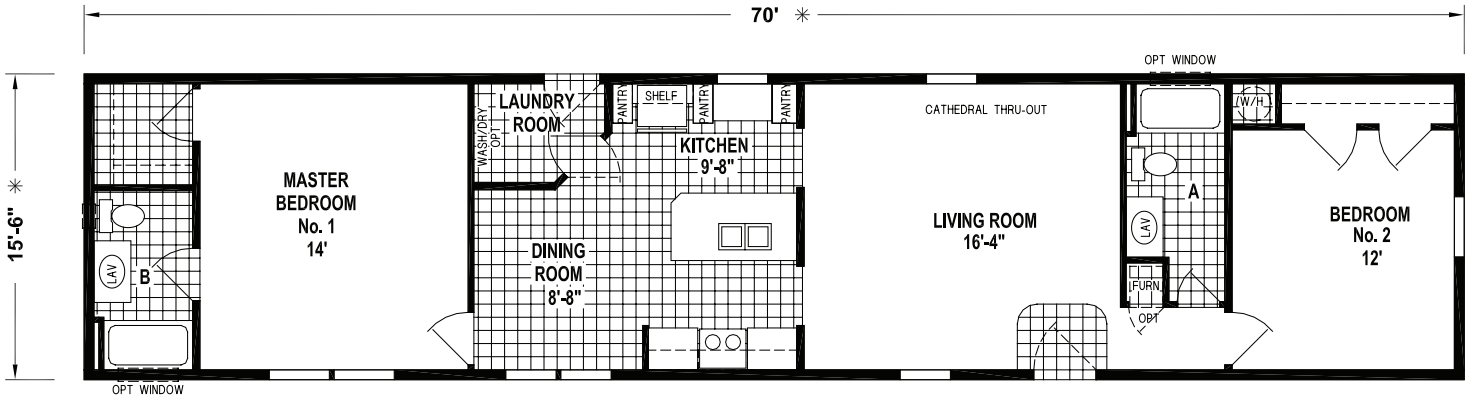
OPTION SLIDING GLASS DOOR



16' SERIES

8755

70' x 16' - 1,085 SQ. FT. - 2 BEDROOMS - 2 BATHS - CATHEDRAL THRU-OUT



OPTION SLIDING GLASS DOOR



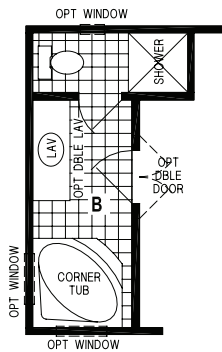
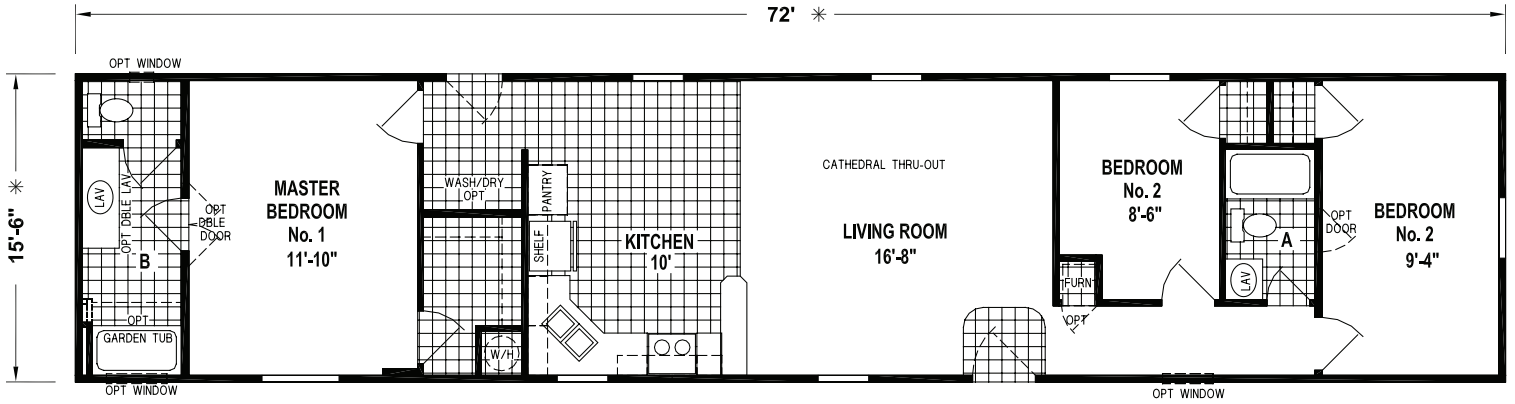
OPTION BOOKCASE/
ENTERTAINMENT CENTER



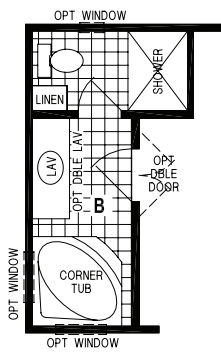
8703

72' x 16' - 1,116 SQ. FT. - 3 BEDROOMS - 2 BATHS - CATHEDRAL THRU-OUT

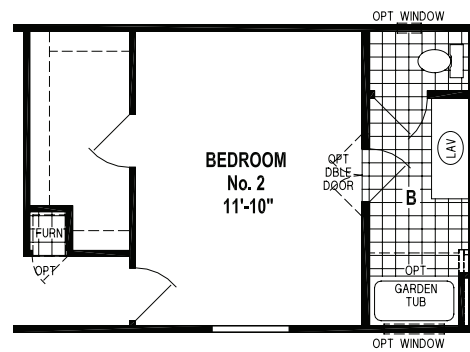
OPTION SLIDING GLASS DOOR



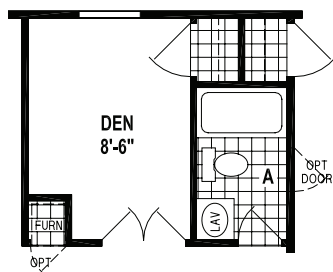
OPTION CORNER TUB BATH WITH 36" SHOWER



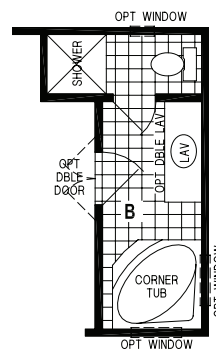
OPTION CORNER TUB BATH WITH 48" SHOWER



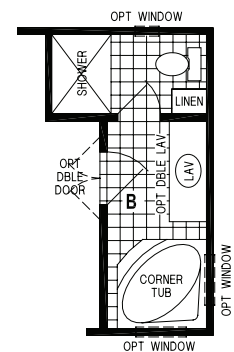
OPTION TWO BEDROOM CONFIGURATION



OPTION DEN



OPTION CORNER TUB BATH WITH 36" SHOWER



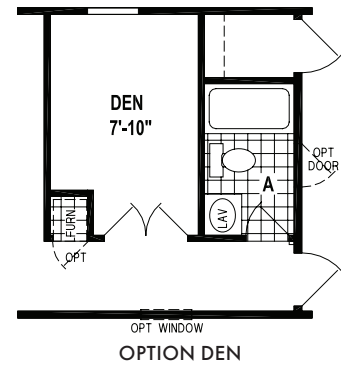
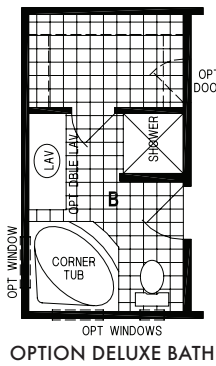
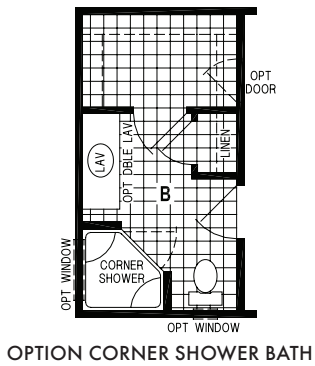
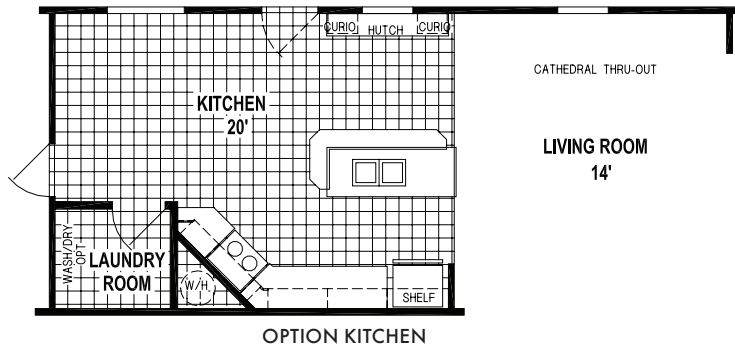
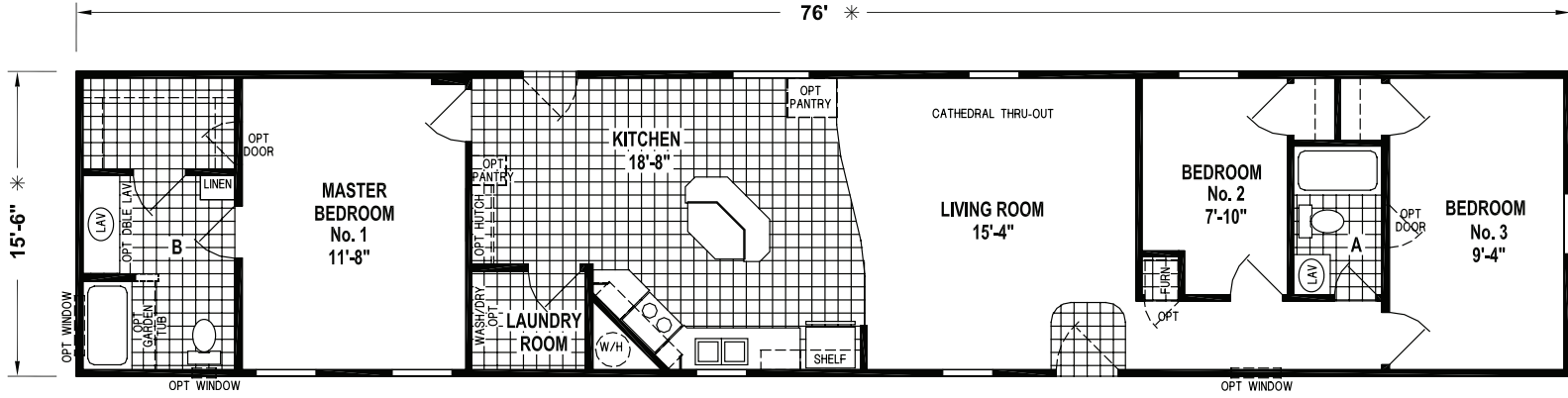
OPTION CORNER TUB BATH WITH 48" SHOWER

16' SERIES

8726

76' x 16' - 1,178 SQ. FT. - 3 BEDROOMS - 2 BATHS - CATHEDRAL THRU-OUT

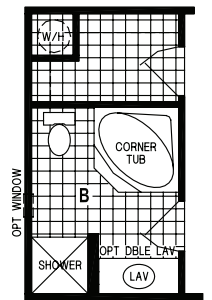
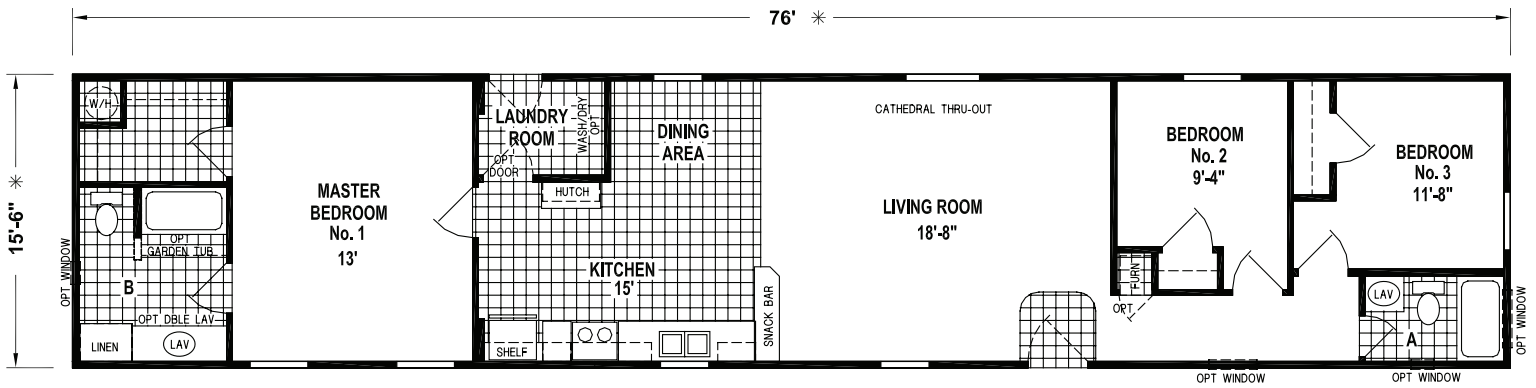
OPTION SLIDING GLASS DOOR



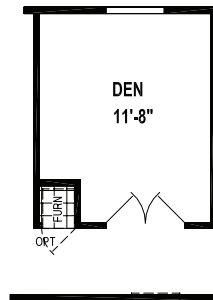
8728

76' x 16' - 1,178 SQ. FT. - 3 BEDROOMS - 2 BATHS - CATHEDRAL THRU-OUT

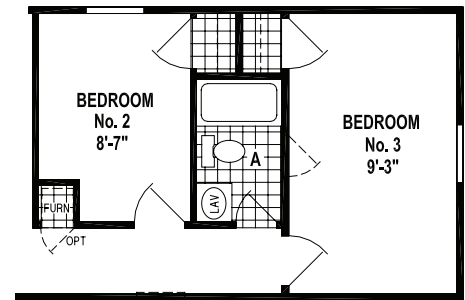
OPTION SLIDING GLASS DOOR



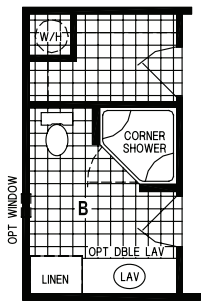
OPTION DELUXE BATH



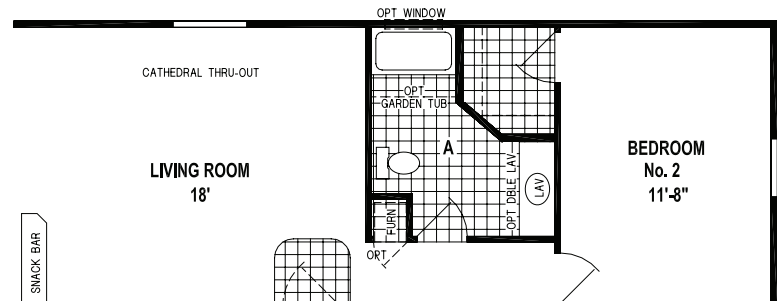
OPTION DEN



ALTERNATE FRONT BEDROOM/HALL BATH



OPTION CORNER SHOWER BATH

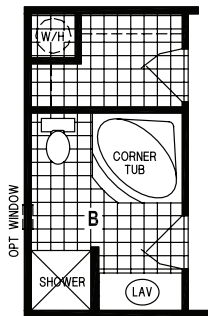
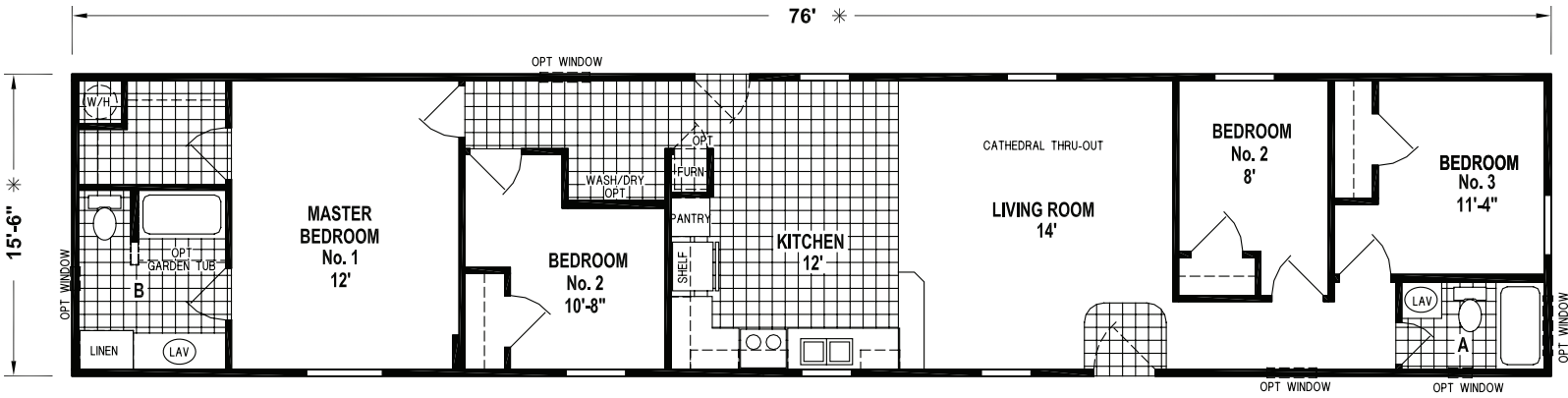


OPTION 2 BEDROOM CONFIGURATION

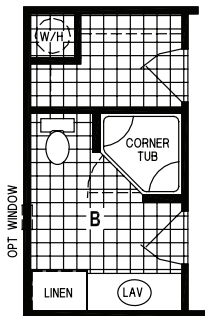
16' SERIES

8734

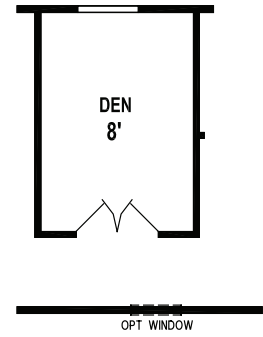
76' x 16' - 1,178 SQ. FT. - 3 BEDROOMS - 2 BATHS - CATHEDRAL THRU-OUT



OPTION DELUXE BATH



OPTION CORNER SHOWER BATH

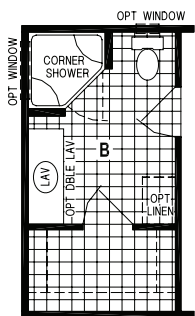
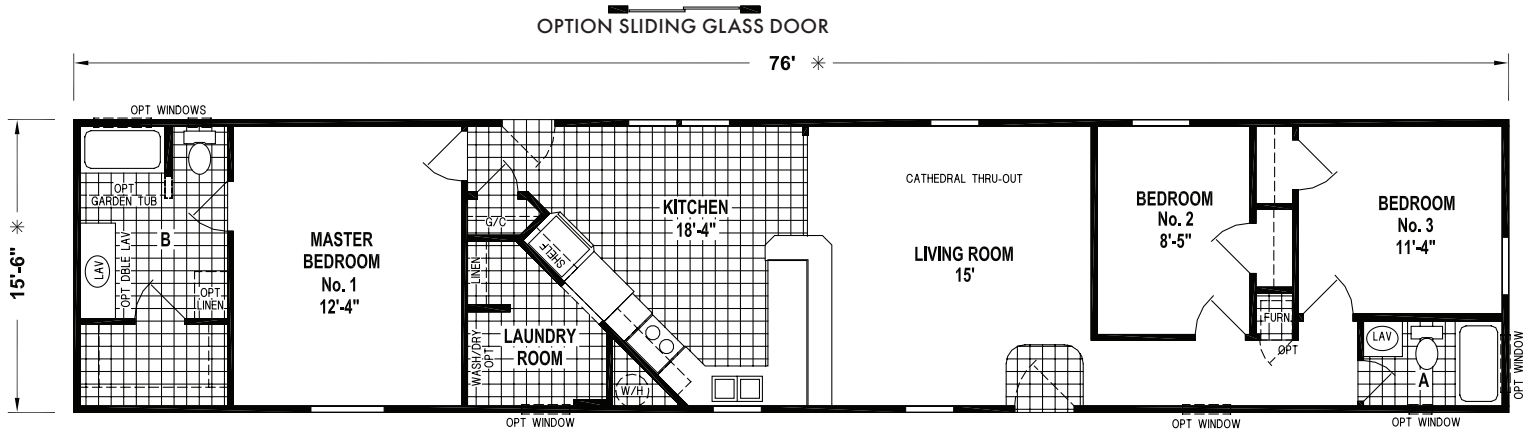


OPTION DEN

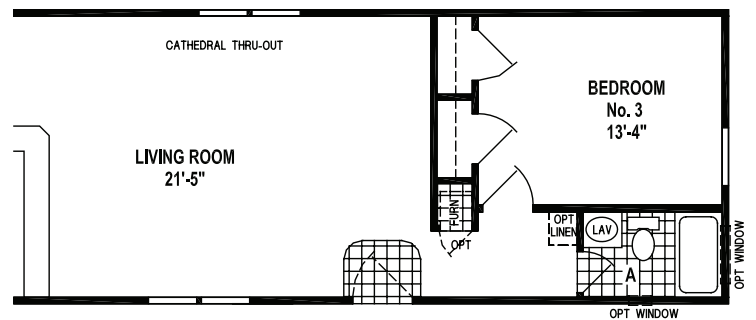


8785

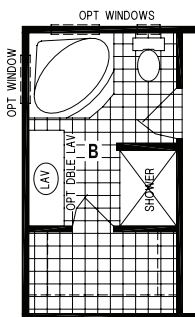
76' x 16' - 1,178 SQ. FT. - 3 BEDROOMS - 2 BATHS - CATHEDRAL THRU-OUT



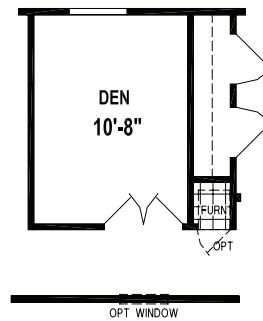
OPTION CORNER SHOWER BATH



OPTION TWO BEDROOM CONFIGURATION



OPTION DELUXE BATH

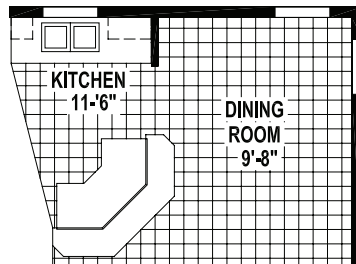
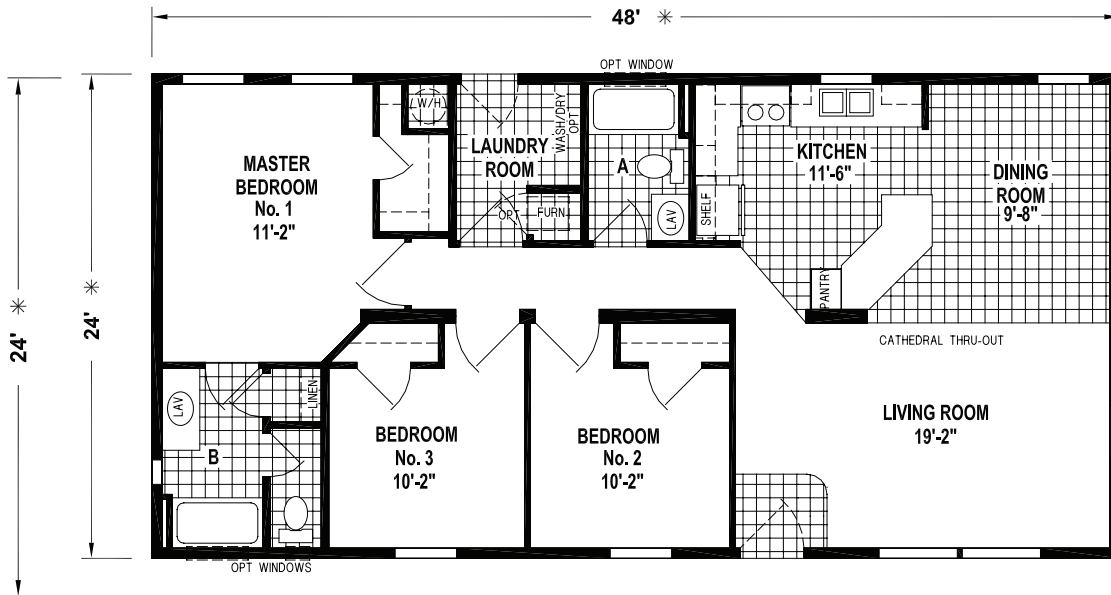


OPTION DEN

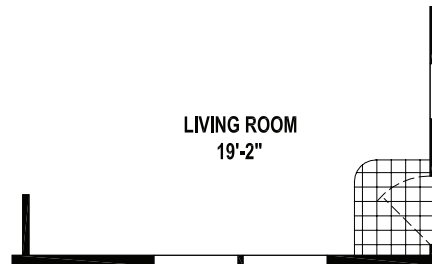
24' SERIES

8432

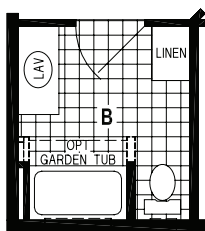
48' x 24' - 1,152 SQ. FT. - 3 BEDROOMS - 2 BATHS - CATHEDRAL THRU-OUT



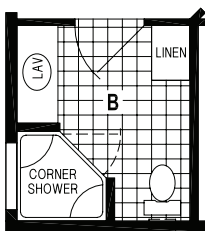
OPTION KITCHEN ISLAND



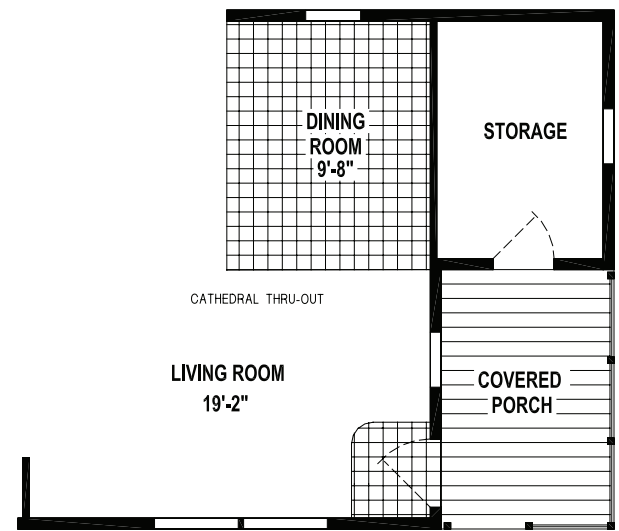
ALTERNATE DOOR LOCATION



OPTION 36" MASTER BATH DOOR



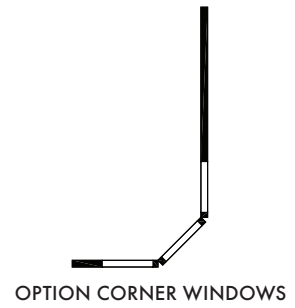
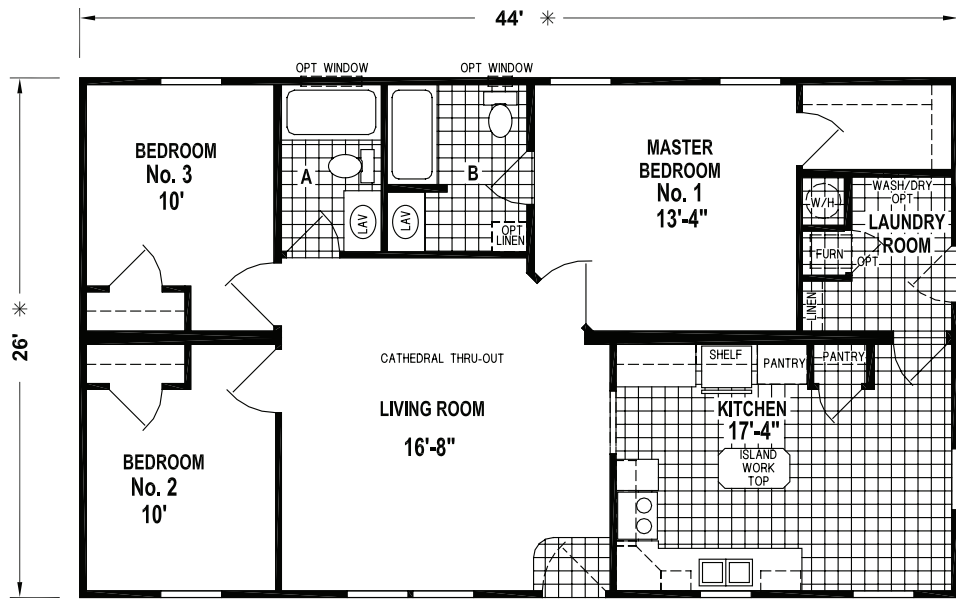
OPTION CORNER SHOWER BATH



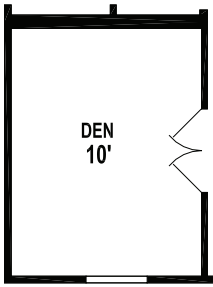
OPTION PORCH AND STORAGE REQUIRES 56' BOX AND FRAME

8803

44' x 28' - 1,144 SQ. FT. - 3 BEDROOMS - 2 BATHS - CATHEDRAL THRU-OUT



OPTION CORNER WINDOWS



OPTION DEN



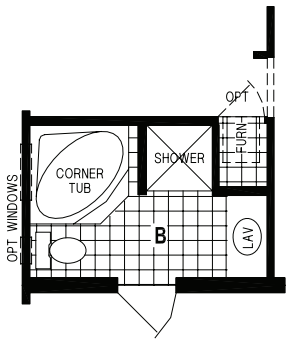
Some features shown may be optional.

28' SERIES

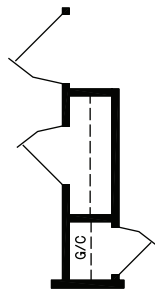
8807

48' x 28' - 1,248 SQ. FT. - 3 BEDROOMS - 2 BATHS - CATHEDRAL THRU-OUT

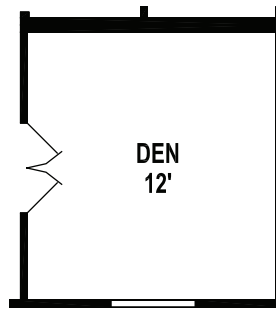
OPTION SLIDING GLASS DOOR



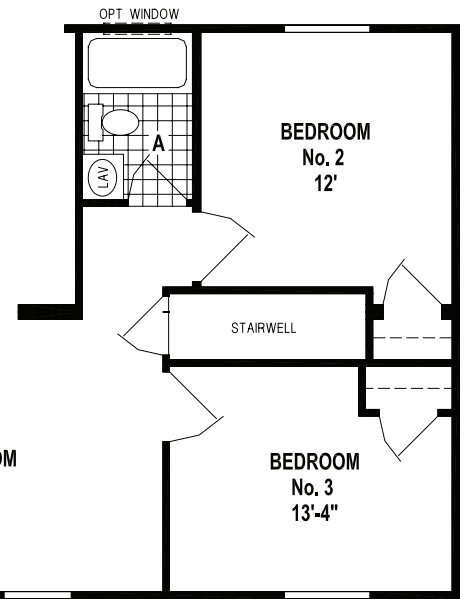
OPTION DELUXE BATH



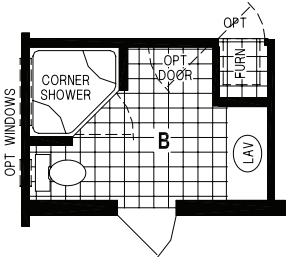
OPTION GUEST CLOSET



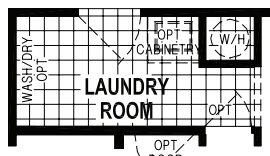
OPTION DEN



OPTION STAIRWELL



OPTION CORNER SHOWER BATH

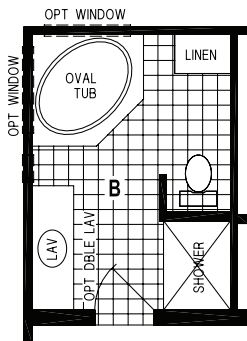
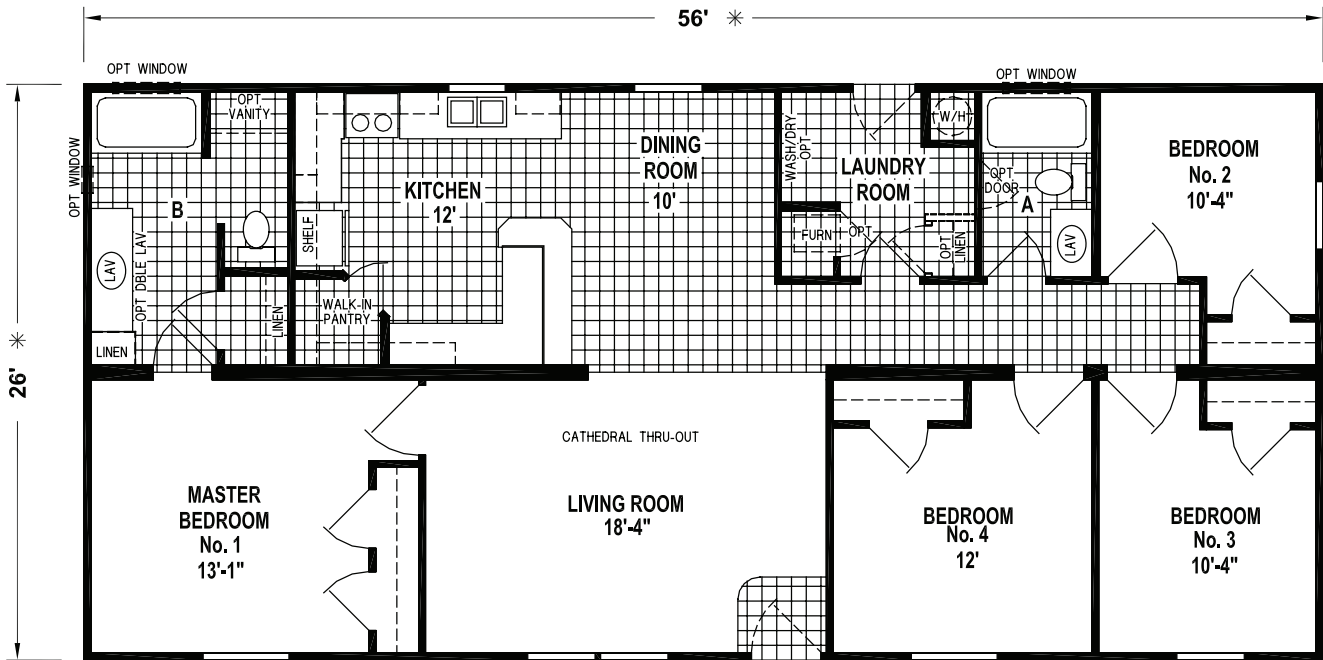


OPTION LAUNDRY ROOM

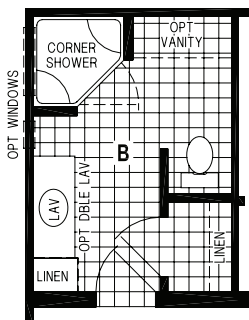
8831

56' x 28' - 1,456 SQ. FT. - 4 BEDROOMS - 2 BATHS - CATHEDRAL THRU-OUT

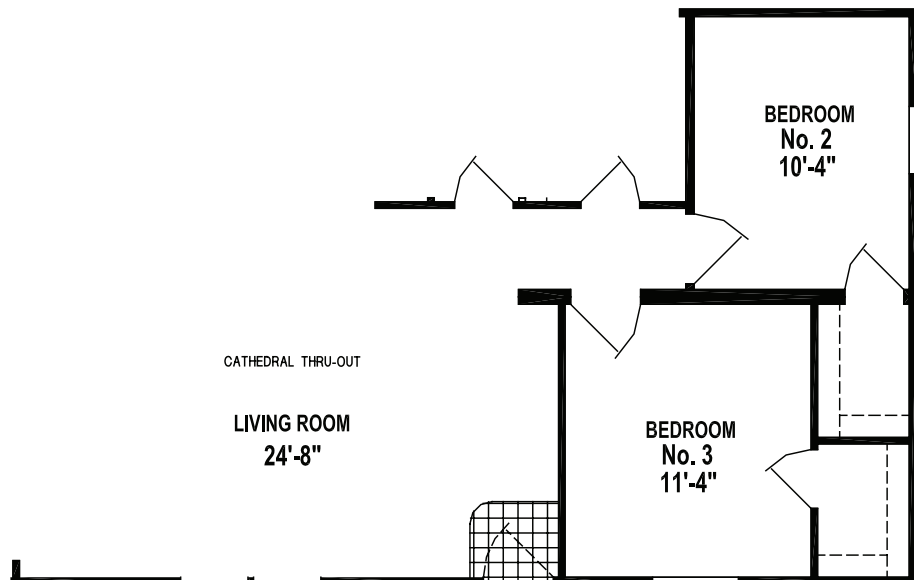
OPTION SLIDING GLASS DOOR



OPTION OVAL TUB BATH



OPTION CORNER SHOWER BATH



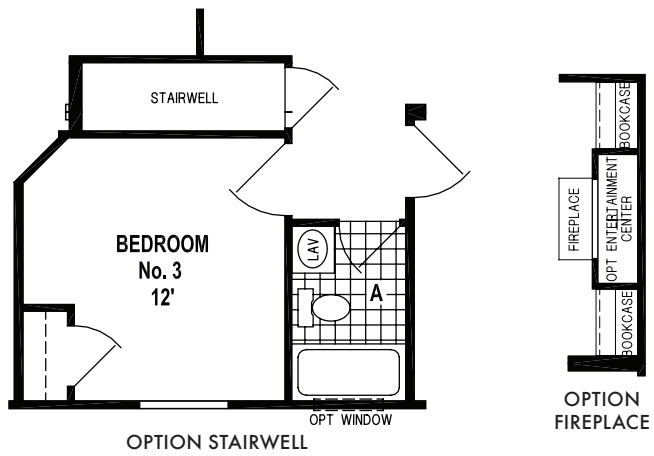
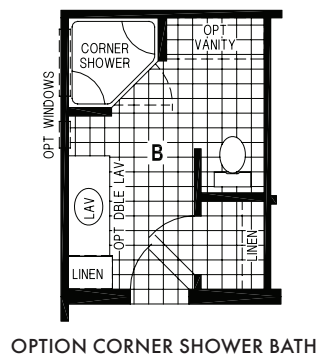
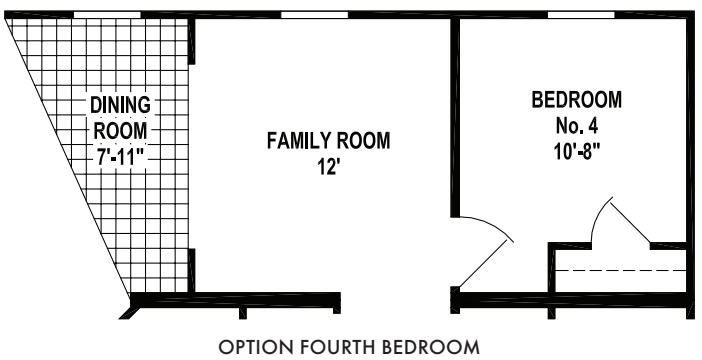
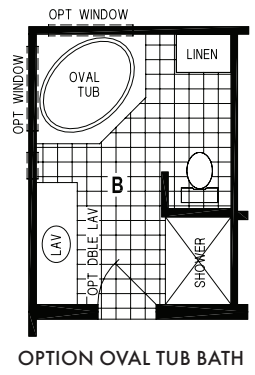
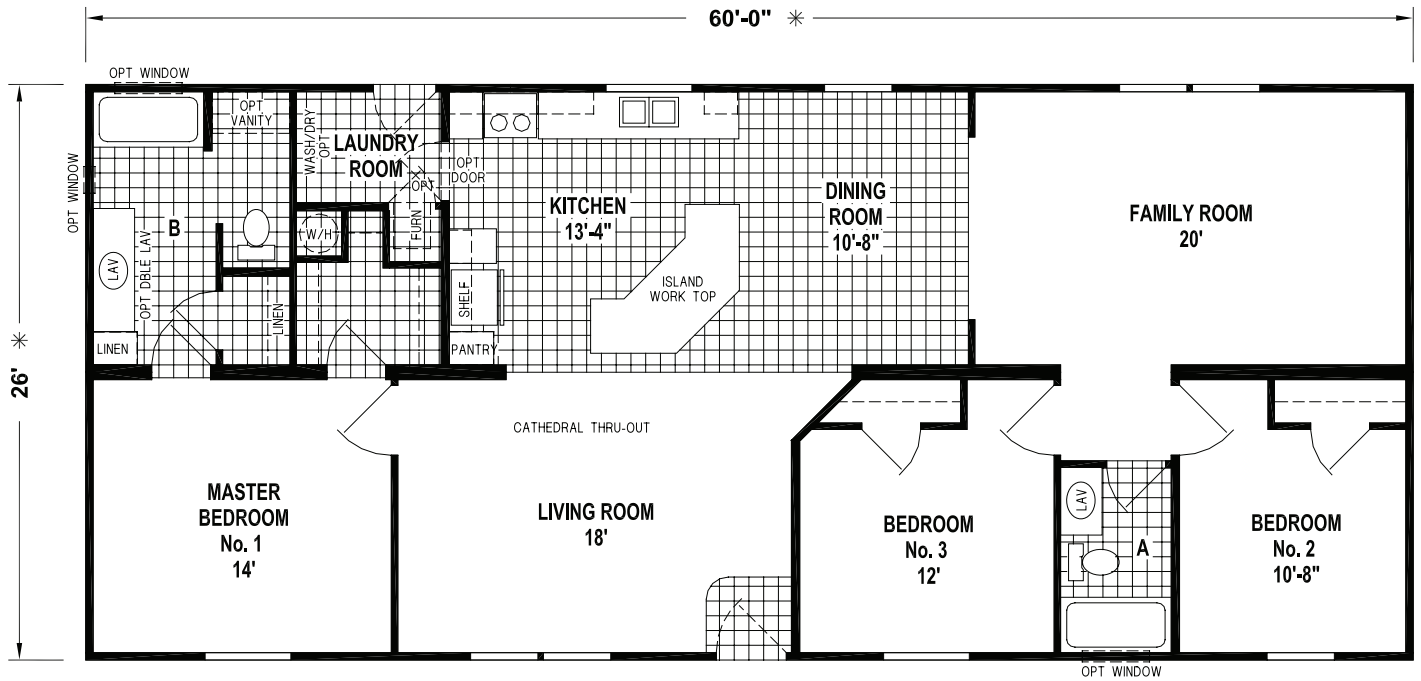
OPTION THREE BEDROOM

28' SERIES

8808

60' x 28' - 1,560 SQ. FT. - 3 BEDROOMS - 2 BATHS - CATHEDRAL THRU-OUT

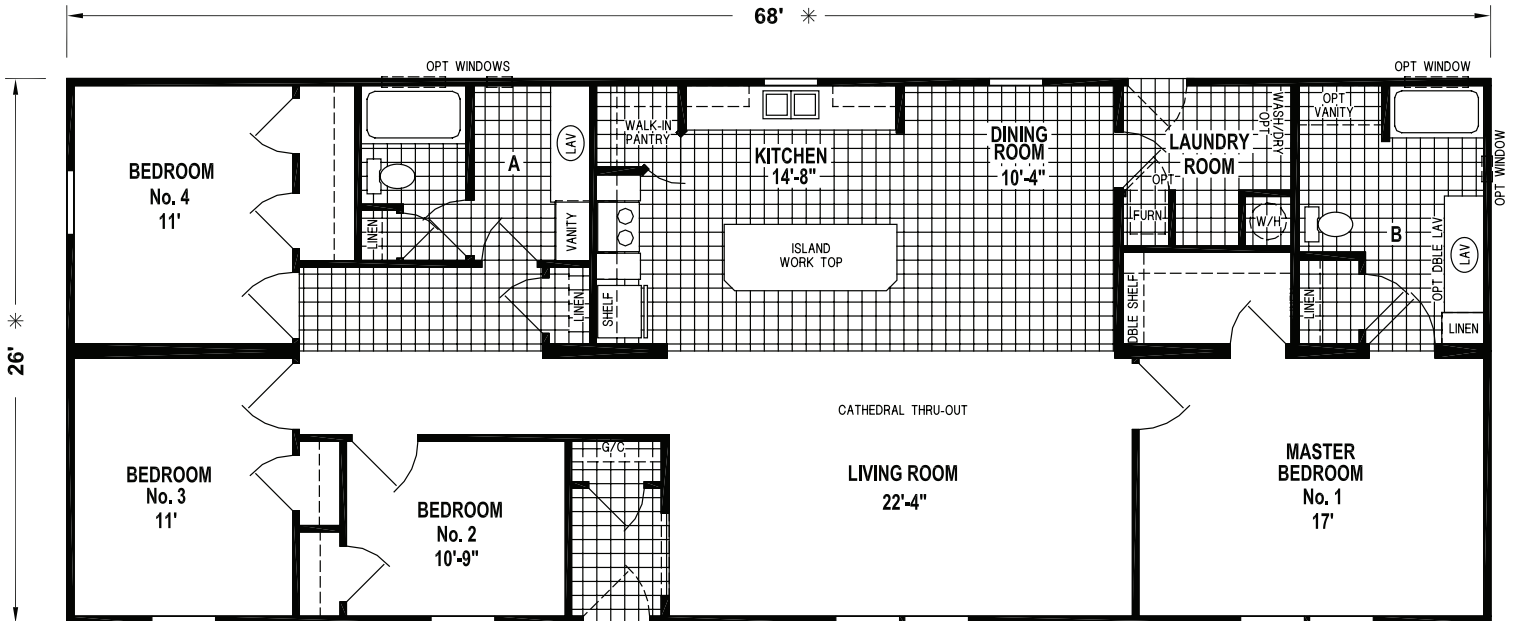
OPTION SLIDING GLASS DOOR



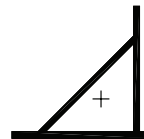
8879

68' x 28' - 1,751 SQ. FT. - 4 BEDROOMS - 2 BATHS - CATHEDRAL THRU-OUT

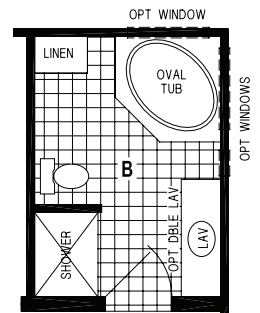
OPTION SLIDING GLASS DOOR



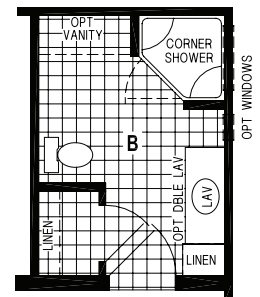
OPTION HUTCH



OPTION FIREPLACE



OPTION OVAL TUB BATH



OPTION CORNER SHOWER BATH

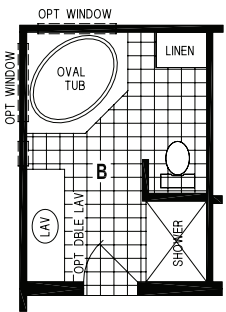
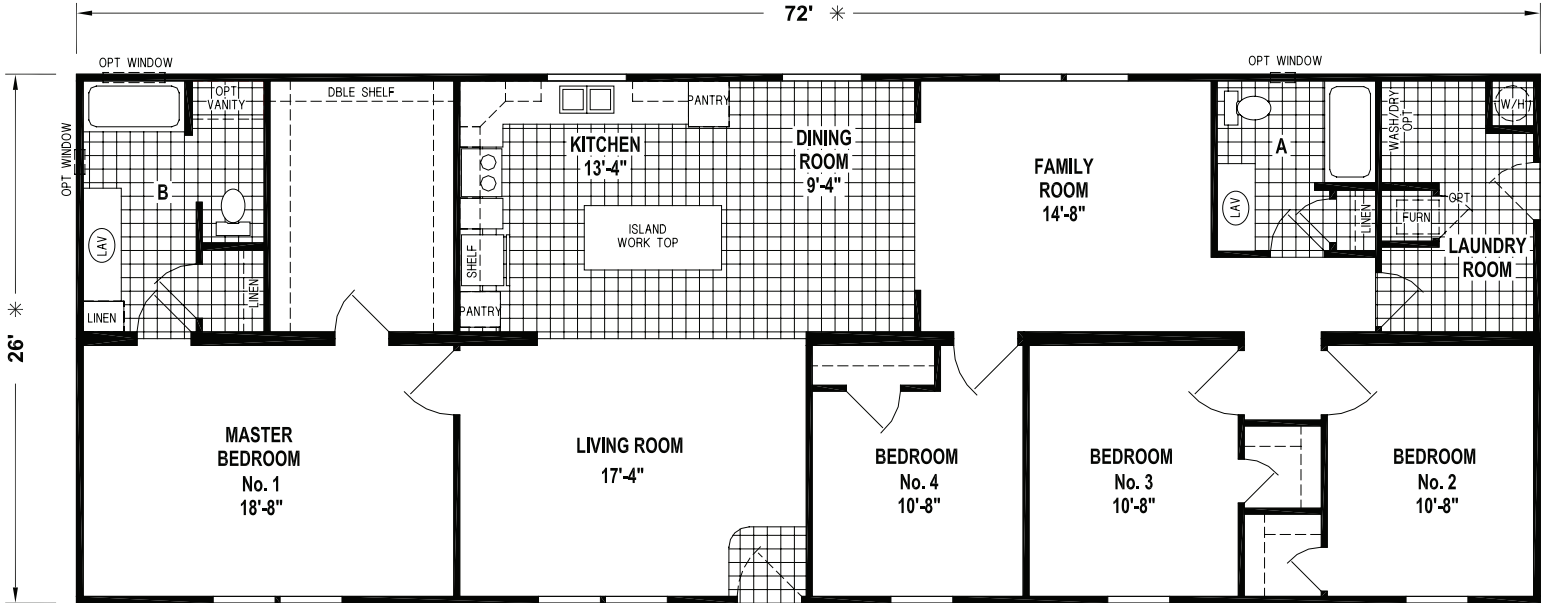


28' SERIES

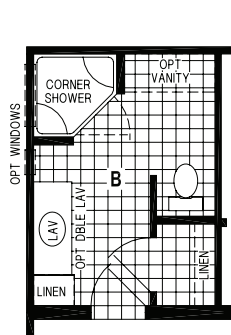
8899

72' x 28' - 1,872 SQ. FT. - 4 BEDROOMS - 2 BATHS - CATHEDRAL THRU-OUT

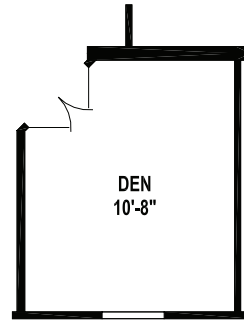
OPTION SLIDING GLASS DOOR



OPTION OVAL TUB BATH



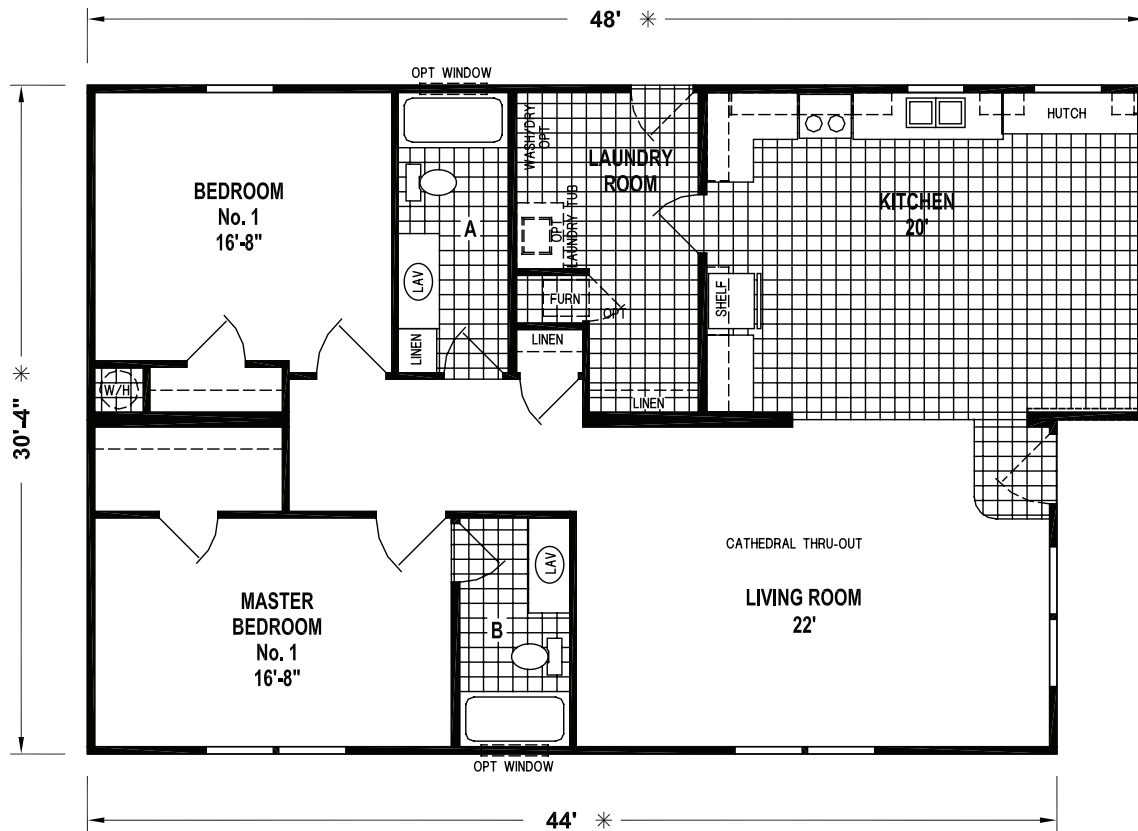
OPTION CORNER SHOWER BATH



OPTION DEN

8915

48' - 44' x 32' - 1,445 SQ. FT. - 2 BEDROOMS - 2 BATHS - CATHEDRAL THRU-OUT

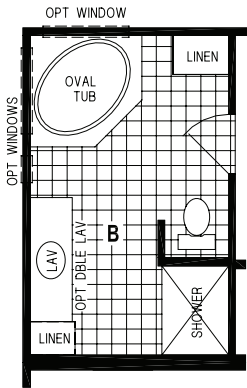
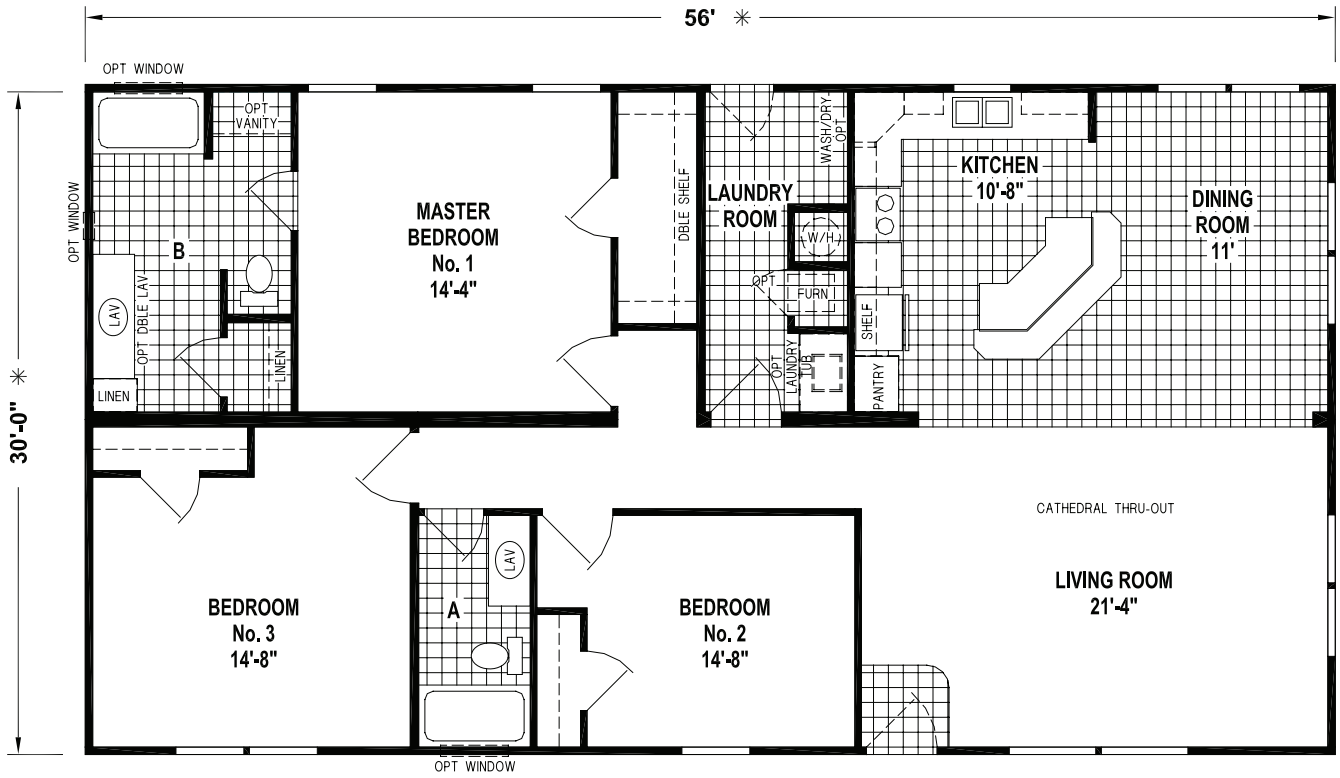


32' SERIES

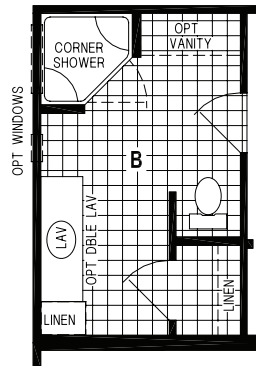
8922

56' x 32' - 1,680 SQ. FT. - 3 BEDROOMS - 2 BATHS - CATHEDRAL THRU-OUT

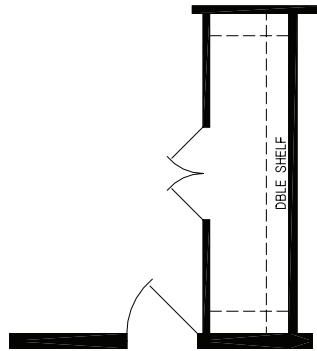
OPTION SLIDING GLASS DOOR



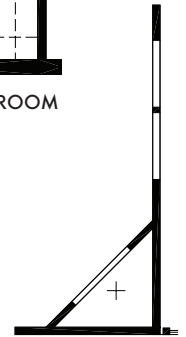
OPTION OVAL TUB BATH



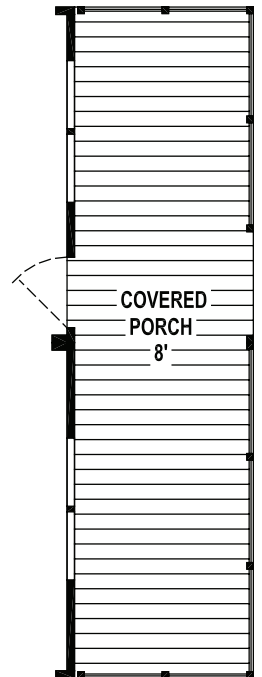
OPTION CORNER SHOWER BATH



OPTION MASTER BEDROOM ENTRY/CLOSET



OPTION FIREPLACE

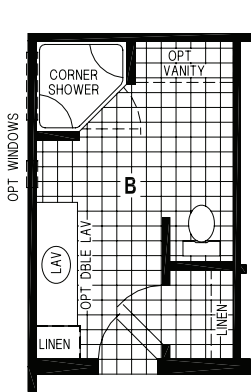
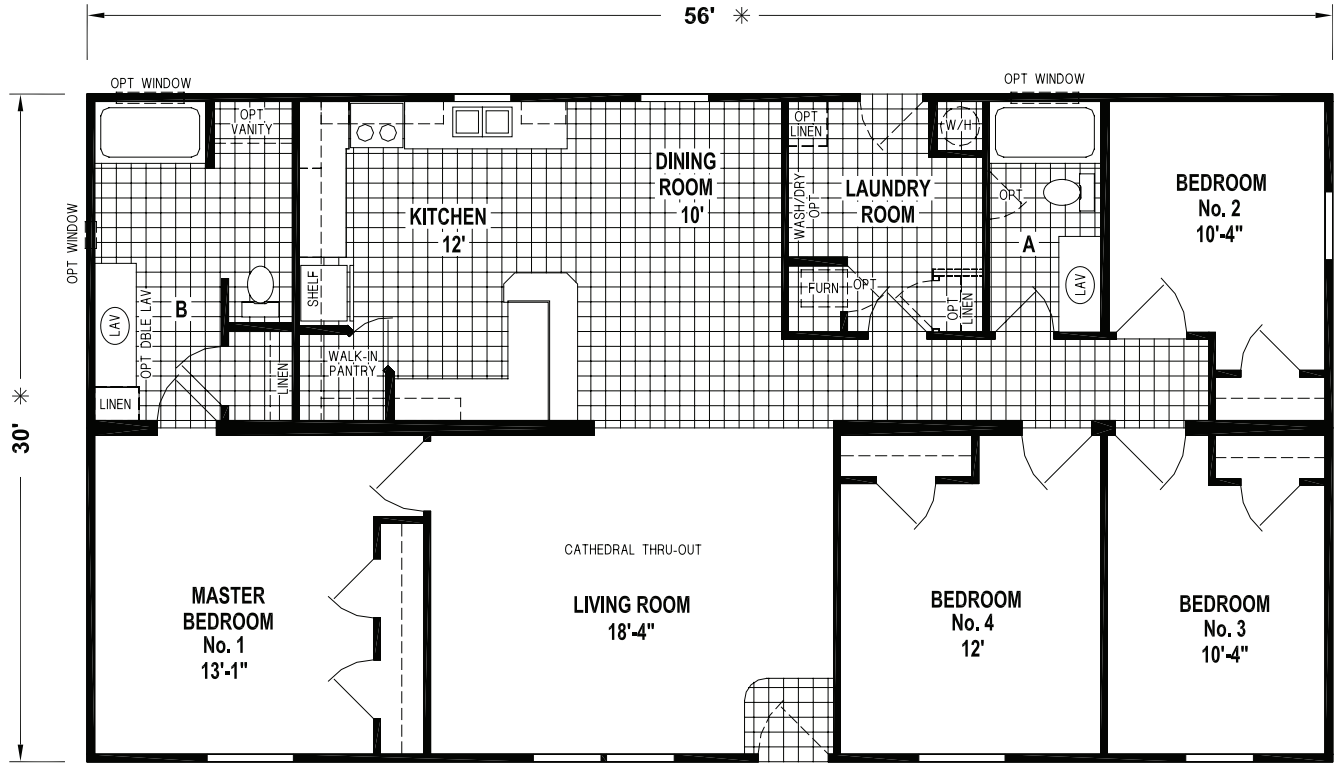


OPTION PORCH
REQUIRES 64" BOX
AND FRAME

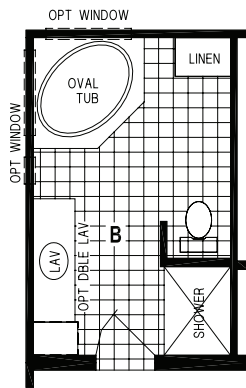
8931

56' x 32' - 1,680 SQ. FT. - 4 BEDROOMS - 2 BATHS - CATHEDRAL THRU-OUT

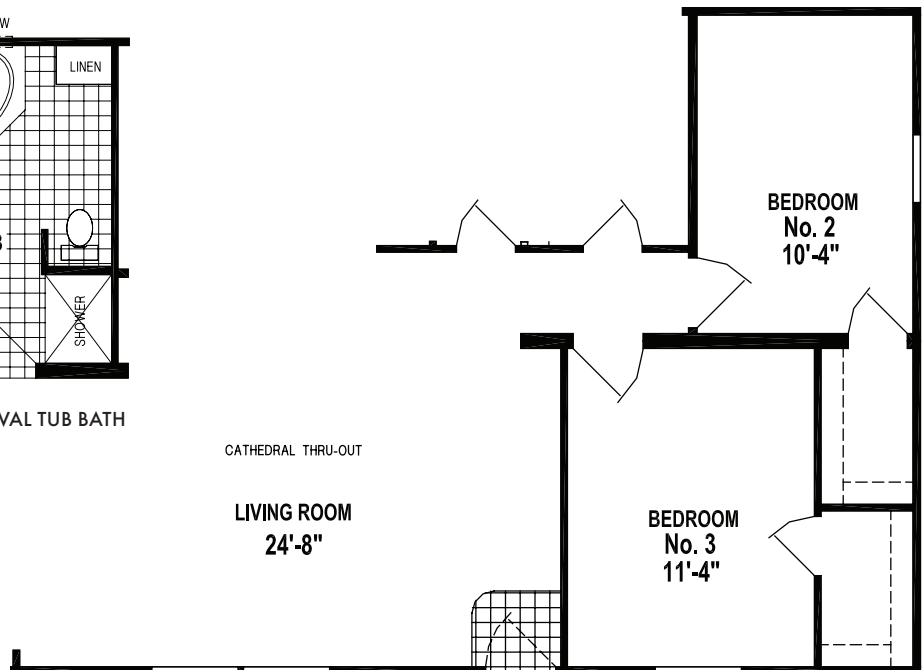
OPTION SLIDING GLASS DOOR



OPTION CORNER SHOWER BATH



OPTION OVAL TUB BATH



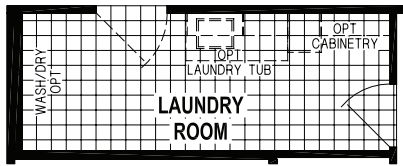
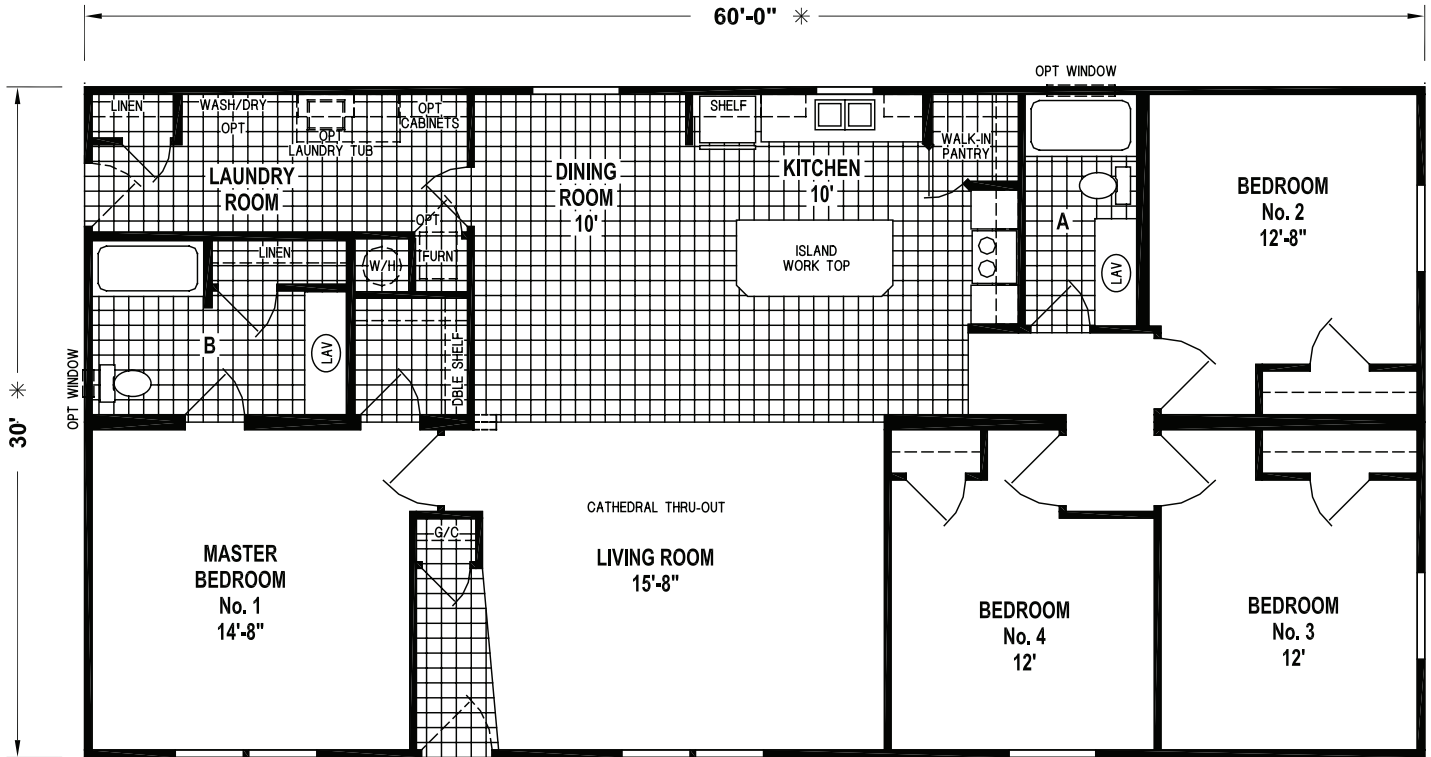
OPTION THREE BEDROOM

32' SERIES

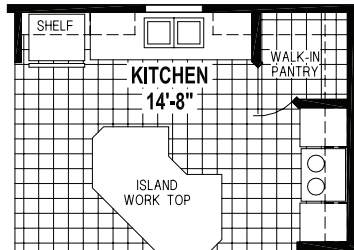
8908

60' x 32' - 1,795 SQ. FT. - 4 BEDROOMS - 2 BATHS - CATHEDRAL THRU-OUT

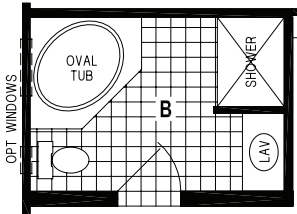
OPTION SLIDING GLASS DOOR



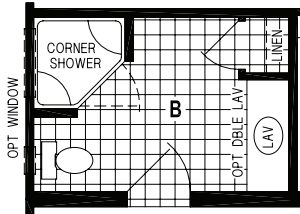
OPTION LAUNDRY ROOM



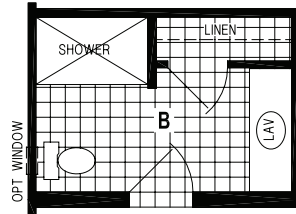
OPTION KITCHEN ISLAND



OPTION OVAL TUB BATH



OPTION CORNER SHOWER BATH

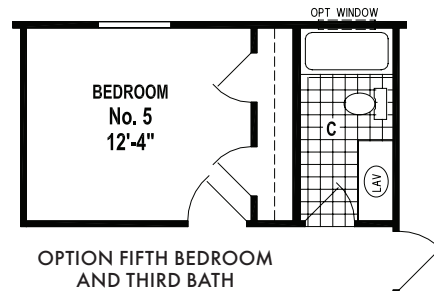
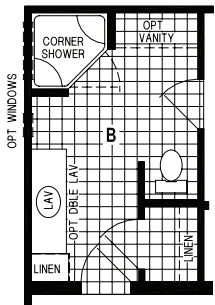
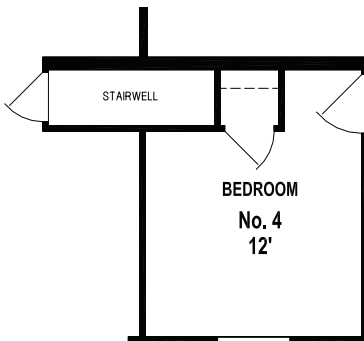
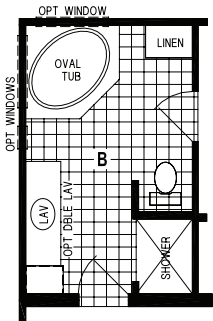
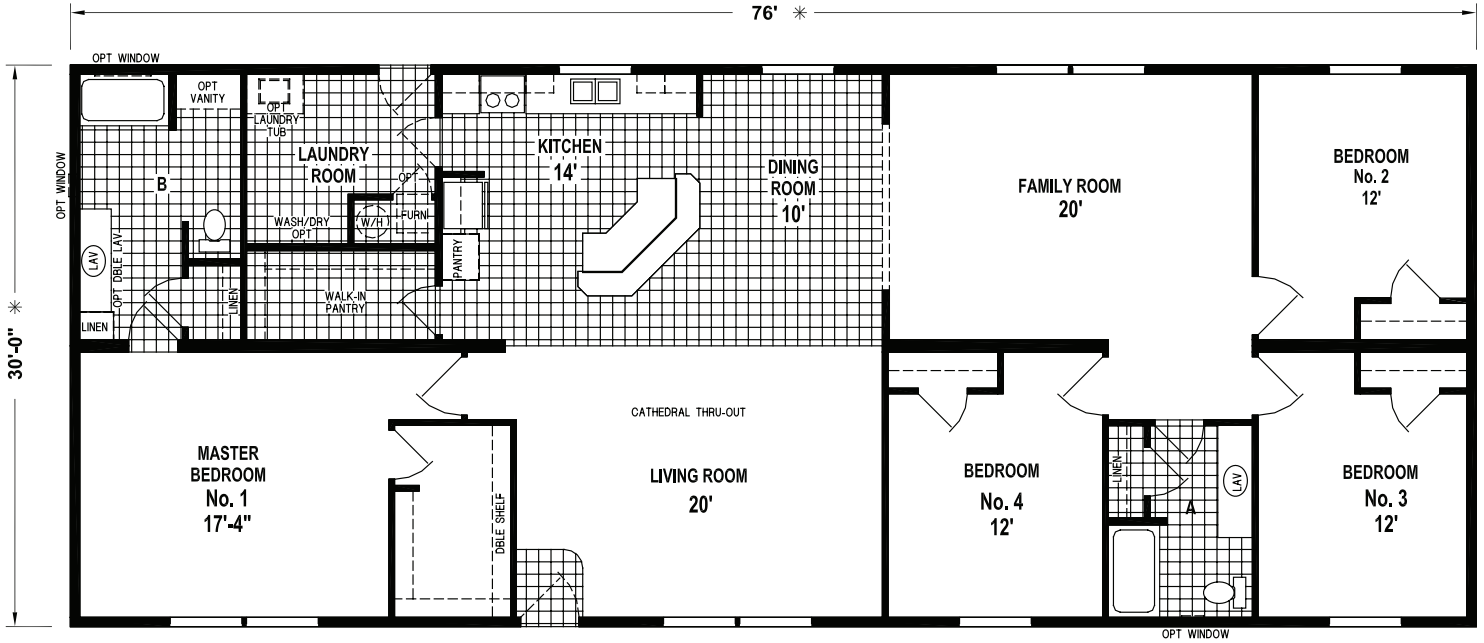


OPTION 60" SHOWER

8977

76' x 32' - 2,280 SQ. FT. - 4 BEDROOMS - 2 BATHS - CATHEDRAL THRU-OUT

OPTION SLIDING GLASS DOOR



Prairie Dune

HOME SERIES

STANDARD FEATURES

CONSTRUCTION

- 7'-6" Sidewall
- 2 x 4 Exterior Wall Construction
- 3/12 Nominal Roof Pitch with 30 lb. Roof Load
- Detachable Hitch
- Thermo Zone II
- R-19 Ceiling, R-11 Walls and R-11 Floors

PLUMBING/ELECTRICAL

- 200 Amp Service
- 2-Bulb Light Fixtures Throughout (Except Closets)
- Ceiling Fan in Living Room
- (1) Exterior Receptacle GFI
- (1) Exterior Frost-Free Faucet
- Whole House Water Shut-Off
- Water Shut-Offs (All Fixtures)

EXTERIOR

- Vinyl Siding with House Wrap
- Sheathing on Sides and Ends
- 25-Year Roof Shingles
- 36" 6-Panel Fiberglass Front Door
- 32" 6-Panel Fiberglass Rear Door
- Single Hung Low-E Windows

INTERIOR

- Cathedral Ceiling Throughout
- Linoleum at Entry
- Shaw "Live Wire" Carpet with 1/2" Carpet Pad
- Tack Strip and Carpet Bar
- Mini Blinds

KITCHEN

- Modular Cabinet Construction
- Flat Panel Doors
- Wood Cabinet Stiles
- Roller Drawer Guides
- Stainless Steel 8" Double Bowl Sink
- Single Lever Faucet with Sprayer

APPLIANCES

- 18 Ct. Ft. Double Door Frost-Free Refrigerator
- 30" Electric Range with Lighted Range Hood

BATHROOM(S)

- Modular Cabinet Construction
- Flat Panel Doors
- Wood Cabinet Stiles
- 3-Piece Acrylic Tub/Shower
- China Lav Bowl
- Dual Handle Lav Faucets
- Elongated China Commodes
- Vanity Light and Power Vent Fan with Light

HEATING/UTILITY

- Electric Furnace
- 40 Gallon Electric Water Heater
- Plumb for Washer
- Wire for Dryer
- Wire Shelving above Washer and Dryer



SKYLINE[®]

WWW.SKYLINEHOMES.COM

For your comfort and safety, Skyline home designs are approved and inspected for conformance to federal standards.

**Dimensions stated to industry standards. Width and length dimensions are nominal and are not to be used for setup of home on site; consult selling retailers for exact specifications. Overall length does not include approximately four foot hitch. The square footage is approximate and based upon nominal exterior floor size.*

Room sizes are measured from floor ends and wall centers.

Because of progressive product improvement, all prices and specifications are subject to change without prior notice or obligation to Skyline Corporation. Your retailer, an independent contractor, who is not an agent of Skyline Corporation, is the party responsible for your purchase contract and any additions, deletions, alterations, or attachments made to or in your home.